

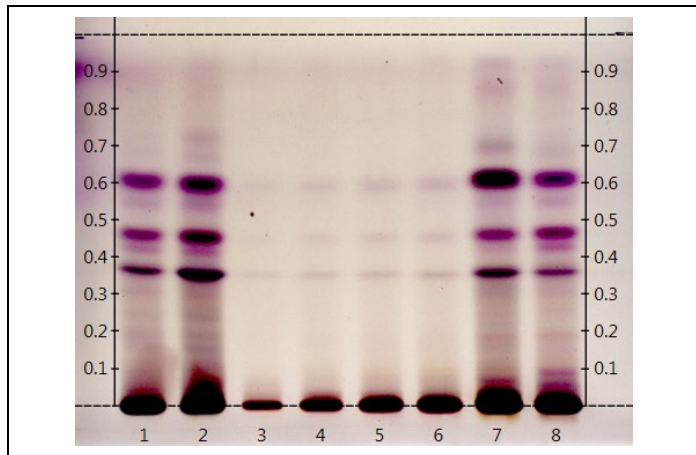
Certificate Issued To:  
**Synaptent**  
47 W. Polk St.  
Chicago, Illinois 60605



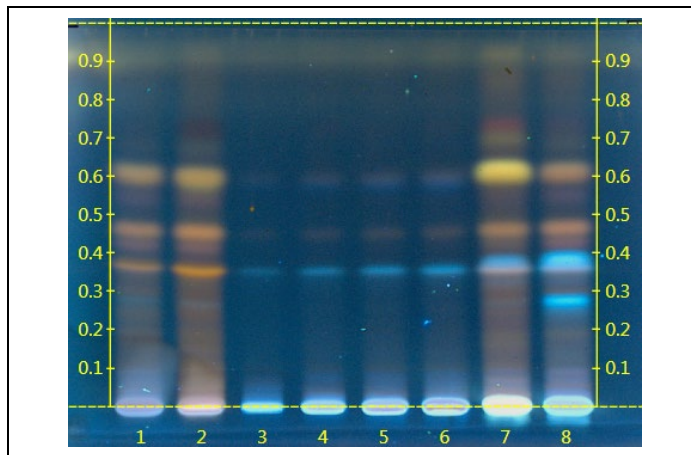
Work performed at:  
**Alkemist Labs**  
12661 Hoover Street  
Garden Grove, CA 92841  
714-754-HERB (4372)  
714-668-9972 (FAX)  
Sales@Alkemist.com  
www.Alkemist.com

**Certificate of Analysis: Kanna Extract (1911281611119)**  
**High Performance Thin-Layer Chromatography with Photo-Documentation**

1



2



Company Name: Synaptent  
Title: Kanna Extract  
Plant Part: Aerial  
Sample Received: 12/17/19  
Sample Packaging: Foil Pouch  
Form of Botanical: powdered extract  
Appearance: silver foil pouch  
Lot Number: (1911281611119) → Lanes 3(2µl), 4(4µl), 5(6µl), 6(8µl)  
Sample: 19351KXV\_1  
Latin Name: *Sceletium tortuosum* [Mesembryanthemaceae]  
Reference Sample: Lane 1(8µl) (AAU10006MHS) *Sceletium tortuosum* (entire); Lane 2(8µl) (AAU26412SLGR2) *Sceletium tortuosum* (aerial part); Lane 7(8µl) (AAU15306AP) *Sceletium tortuosum* (); Lane 8(8µl) (AAU14206TA2) *Sceletium tortuosum* (herb (leaf, flower, stem)); held at Alkemist Labs, Garden Grove, CA.  
Analyst: A. Davis, N. Afendikova, M. Edwards, S. Kabbaj, N. Hoang, K. Tran, J. Lopez, J. Mares 128682  
Sample Preparation: 0.3g+3mL 70% grain Ethanol, sonicate/heat at 50° C for 30 min.  
Stationary Phase: Silica gel 60, HPTLC plates  
Mobile Phase: toluene: diethyl ether: 1.75 M AcCOOH(dil conc 1:10) [3.3/3.3/3.3]  
Detection: (1) Vanillin/Sulfuric, 110°C, 2min, vis (Reich, E., 2007)  
(2) Vanillin/Sulfuric, 110°C, 2min, 366nm (Reich, E., 2007)  
Reference Source: Scott, G. and Springfield, E.P. (2004). Pharmaceutical monographs. South African National Biodiversity Institute IDT-SOP-72-01

**Comments & Conclusions:** Lanes 3, 4, 5, 6 are the test sample Kanna Extract (1911281611119). Lanes 1, 2, 7, 8, are the reference samples used for comparison. This test Sample, Kanna Extract (1911281611119) is not consistent with the chromatographic profile of the reference samples of *Sceletium tortuosum*, used above. **This test sample Kanna Extract (1911281611119) indicates the presence of a customized extract derived from *Sceletium tortuosum* aerial part.**  
**OOS report generated for this sample. Reference# 19351KXV\_1: OOS-TLC-2019-1748.**

**NOTE:** The above conclusion may be a function of the natural variance found in botanicals &/or the extraction process used to create specific extracts. The growing and drying conditions, age, seasonal variations, geographic location, extraction solvents, etc. all play a role in the phytochemical fingerprint of botanicals as well as their extracts; hence, chromatographic variations are expected.

Examined, Reviewed & Authorized by: Khanh N Tran, HPTLC, R&D Supervisor, Alkemist Labs

Report Date: 12/23/19

ISO/IEC 17025



Note: Any unidentified lanes in the above chromatograms are confidential and may represent internal studies or other test samples not related to 1911281611119. This report applies to the sample investigated and is not necessarily indicative of the quality or condition of apparently identical or similar products. This report is for the exclusive use of the party who requested the report and not for public dissemination or use by third parties, including for promotional purposes, without the prior written permission of Alkemist Labs, Inc. This report provides technical results for a specific sample and the report shall not be altered, modified, supplemented or abstracted in any manner. Any violation of these conditions renders the report and its results void. © 2019 Alkemist Labs, Inc. All Rights Reserved