

LIFTMODE

LIFTMODE
47 W. Polk St. STE 100-241
Chicago, IL 60605

liftmode@liftmode.com
liftmode.com

CERTIFICATE OF ANALYSIS

Phenibut HCL (β -Phenyl- γ -aminobutyric acid)

Material Lot #: 20201010
Country of Origin: China

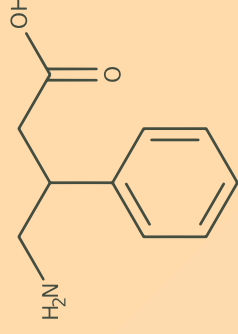
Analysis Date: 02/02/2021
Retesting Date: 02/02/2024

Analysis	Claim	Result
Phenibut HCL	$\geq 99\%$	100.5%

Test	Specification	Result
H-NMR ID	Conforms	Conforms
HPLC Assay	$\geq 99\%$	100.5%
ICP-MS		
Lead	≤ 0.5 ppm	0.058 ppm
Arsenic	≤ 1.5 ppm	0.007 ppm
Cadmium	≤ 0.5 ppm	< 0.001 ppm
Mercury	≤ 0.5 ppm	< 0.001 ppm

Phenibut HCL should be stored at or below room temperature in a tightly sealed durable container. Phenibut HCL should be protected from excess heat, direct sunlight, excess humidity, and moisture. Phenibut HCL has a retesting period of 3 years from the date of analysis when properly stored.

Phenibut Hydrochloride



Main Benefits

- Phenibut is a nootropic and calming β -phenyl derivative of GABA, the main inhibitory neurotransmitter. Phenibut acts as a GABA-B agonist and $\alpha 2\delta$ subunit containing voltage-dependent Ca^{2+} channel blocker.
- Phenibut HCL is the stable hydrochloride salt of this nootropic compound
- Benefits of Phenibut include calming, mood lifting, sociability enhancing, sensory enhancing effects, as well as promotion of deep, restful sleep.

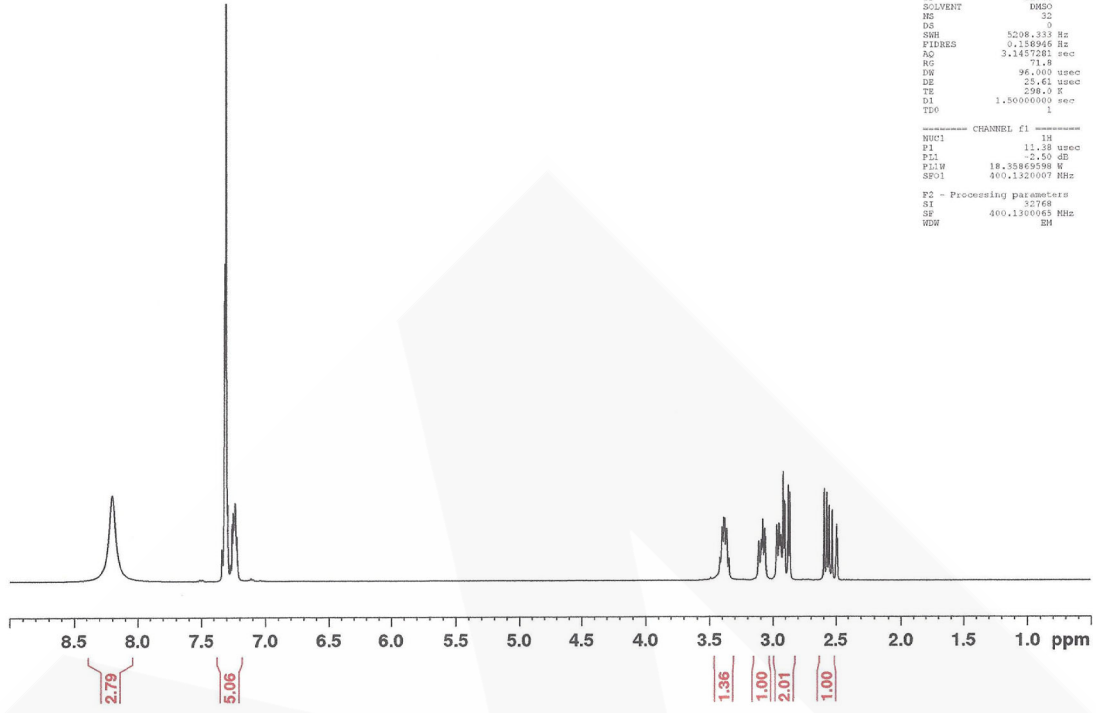
Main Cautions

- Phenibut tolerance builds quickly** and it should not be used more than twice per week to mitigate the potential for adverse effects.
- Do not exceed the recommended serving size. Mixing Phenibut with CNS depressants may cause dizziness, vertigo, nausea and lethargy.
- Overuse of Phenibut HCL can cause physical dependence and withdrawal. Symptoms of withdrawal may include anxiety, depression, and insomnia.

Usage Tips

- A 0.625cc measuring scoop is included. One level scoop contains one serving of approximately **500mg Phenibut HCL**. As a nootropic compound, take 1-2 servings 1-2 times per day. Start at the lower suggested quantity to assess response.
- The negative effects of Phenibut HCL are dependent on the amount taken, so use of a scale with 10mg/0.01g accuracy or better is highly recommended.
- The benefits of Phenibut HCL are most effective when they are supported by a healthy diet and plenty of exercise.
- This nootropic compound is not intended to treat, diagnose, prevent or cure any diseases. Consult your healthcare provider before use if you have a medical condition or if you are taking any prescription medications.
- Anecdotal sources suggest that it's relatively lower risk for an adult of average build to stack Phenibut HCL with other nootropic compounds, however **negative effects such as tolerance and withdrawal vary from person to person and avoiding frequent use or large doses without extended breaks is highly recommended.**

1H NMR of Phenibut HCl
in DMSO
Lot # 21011704
Colmaric Analytical
400 MHz
01-22-21



```

Current Data Parameters
NAME      Jan20-2021-colmaric
EXPNO    1
PROCNO   1

F2 - Acquisition Parameters
Date_    20210122
Time     14.58
INSTRUM  spect
PROBHD   5 mm PABBO BBO
PULPROG  zgpg30
TD        32768
SOLVENT  DMSO
NS        32
DS        4
SWH       5208.333 Hz
FIDRES   0.138946 Hz
AQ        3.1457281 sec
RG        71.8
JW        95.000 usec
DE        25.61 usec
TE        298.3 K
D1        1.5006000 sec
TE0       1

----- CHANNEL f1 -----
NUC1      1H
P1        11.38 usec
PT1       -2.50 dB
PL1M      18.35849598 W
SFO1      400.1320007 MHz

F2 - Processing parameters
SI         32768
SF         400.1320008 MHz
WDW        EM
  
```



Certificate of Analysis

Client:
Synaptent LLC
47 W Polk Street, 100-241
Chicago, IL 60654

Sample Collected By: Client

Product Name	Phenibut HCL	Product Lot Number	20201010
Report Date	02/02/21	Laboratory Number	21011704

Description	Method	Specification	Results
Identification	H-NMR	Conforms	Conforms
Assay	HPLC	NLT 99%	100.5%
Lead	ICP-MS	<1 ppm	0.058 ppm
Arsenic	ICP-MS	<1 ppm	0.007 ppm
Cadmium	ICP-MS	<1 ppm	<0.001 ppm
Mercury	ICP-MS	<1 ppm	<0.001 ppm

Collin Thomas
Laboratory Manager

02/02/2021
Date

The result(s) stated in this report is only for the sample submitted. This report may not be reproduced in whole or in part, nor may any reference be made to the work, the result, or the company in any news release, public announcements or advertising without our prior written consent.

812 Meadow Lark Lane, Goodlettsville, TN 37072
Tel: 615-239-8604