



LIFTMODE
47 W. Polk St. STE 100-241
Chicago, IL 60605

liftmode@liftmode.com
www.liftmode.com

CERTIFICATE OF ANALYSIS

Hordenine HCL (4-[2-(dimethylamino)ethyl]phenol)

Material Lot #: 151201 Manufacture Date: 12/24/2015
Country of Origin: China Expiration Date: 12/23/2017

Analysis	Claim	Result
Hordenine HCL	≥98%	99.8%

Test	Specification	Result
Appearance	White powder	Complies
Loss on Drying	<3.0%	0.2%
Residue on Ignition	<3.0%	0.1%
Any Single Impurity	<0.5%	Complies
Heavy Metals (µg/g)	<10 ppm	Complies
Arsenic	<2.0 ppm	Complies
Lead	<2.0 ppm	Complies
Cadmium	<1.0 ppm	Complies
Mercury	<1.0 ppm	Complies
Total Plate Count	<1000 cfu/g	Complies
Mould and Yeast	<100 cfu/g	Complies
Coliform	<10 cfu/g	Complies
Salmonella	Negative Result	Complies
E. Coli	Negative Result	Complies
Staphylococcus	Negative Result	Complies
Pseudomonas aeruginosa	Negative Result	Complies

Conforms to Standard



LIFTMODE
47 W. Polk St. STE 100-241
Chicago, IL 60605

liftmode@liftmode.com
www.liftmode.com

CERTIFICATE OF ANALYSIS

Hordenine HCL (4-[2-(dimethylamino)ethyl]phenol)

Laboratory Number: 6701

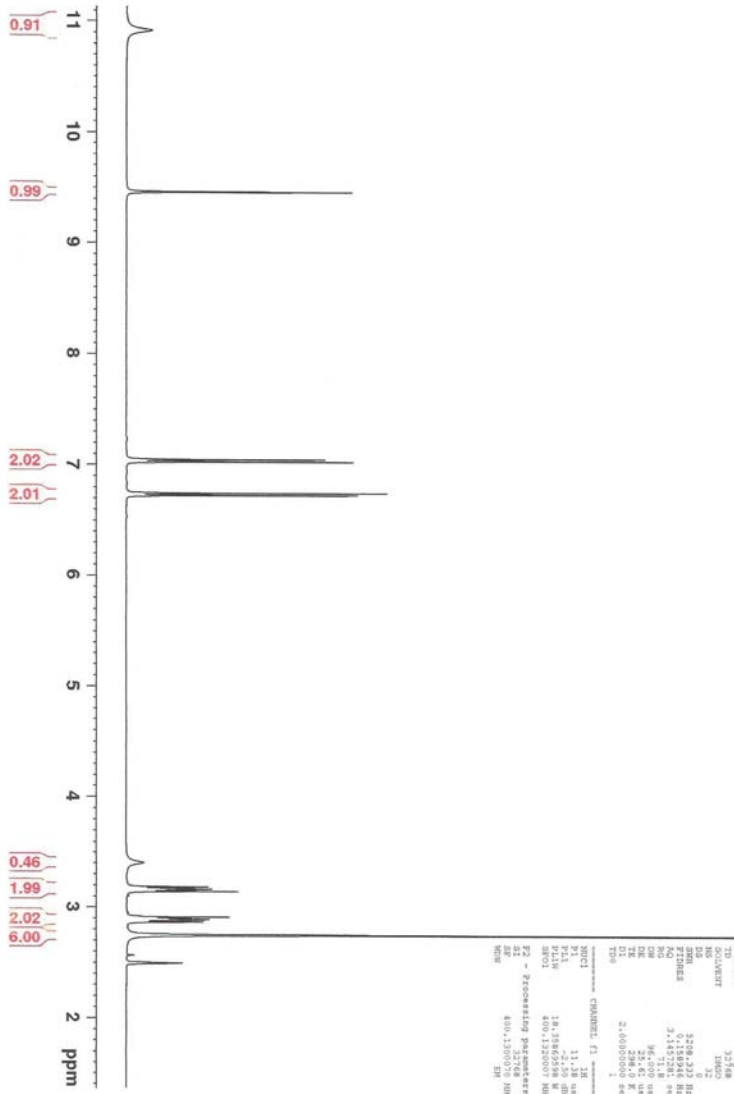
Product Name	Hordenine HCL	Client Lot Number	151201
Report Date	03/15/16	Order #	SNT_0129

Test	Method	Result
Identification	H-NMR	Conforms
Assay	HPLC	99.7%
Heavy Metals	ICP-MS	ppm
Arsenic	ICP-MS	0.233
Cadmium	ICP-MS	0.003
Lead	ICP-MS	0.964
Mercury	ICP-MS	0.001

Collin Thomas *Collin Thomas*
Laboratory Manager

03/15/2016 *3/15/16*
Date

¹H NMR of Hordenine HCl
 In DMSO
 Lot #6701
 400 MHz
 Colmaric Analytical
 03-09-16



Current Data Parameters
 Name: NMR0-2016-colmaric
 Date_: 20160309
 P1: 1.00
 P2: Acquisition Parameters
 P3: Processing Parameters
 P4: 16.00000000 MHz
 P5: 400.13000000 MHz
 P6: 32768
 P7: 400.13000000 MHz
 P8: 1

Acquisition Parameters
 Date_: 20160309
 Time: 11:00:00
 Instrument: spect
 Processor: f2
 F2: 400.13000000 MHz
 F1: 125.76000000 MHz
 P1: 1.00
 P2: 3.00
 P3: 32768
 P4: 32768
 P5: 32
 P6: 32
 P7: 32
 P8: 32
 P9: 32
 P10: 32
 P11: 32
 P12: 32
 P13: 32
 P14: 32
 P15: 32
 P16: 32
 P17: 32
 P18: 32
 P19: 32
 P20: 32
 P21: 32
 P22: 32
 P23: 32
 P24: 32
 P25: 32
 P26: 32
 P27: 32
 P28: 32
 P29: 32
 P30: 32
 P31: 32
 P32: 32
 P33: 32
 P34: 32
 P35: 32
 P36: 32
 P37: 32
 P38: 32
 P39: 32
 P40: 32
 P41: 32
 P42: 32
 P43: 32
 P44: 32
 P45: 32
 P46: 32
 P47: 32
 P48: 32
 P49: 32
 P50: 32
 P51: 32
 P52: 32
 P53: 32
 P54: 32
 P55: 32
 P56: 32
 P57: 32
 P58: 32
 P59: 32
 P60: 32
 P61: 32
 P62: 32
 P63: 32
 P64: 32
 P65: 32
 P66: 32
 P67: 32
 P68: 32
 P69: 32
 P70: 32
 P71: 32
 P72: 32
 P73: 32
 P74: 32
 P75: 32
 P76: 32
 P77: 32
 P78: 32
 P79: 32
 P80: 32
 P81: 32
 P82: 32
 P83: 32
 P84: 32
 P85: 32
 P86: 32
 P87: 32
 P88: 32
 P89: 32
 P90: 32
 P91: 32
 P92: 32
 P93: 32
 P94: 32
 P95: 32
 P96: 32
 P97: 32
 P98: 32
 P99: 32
 P100: 32