

LIFTMODE

LIFTMODE
47 W. Polk St. STE 100-241
Chicago, IL 60605
liftmode@liftmode.com
liftmode.com

CERTIFICATE OF ANALYSIS

Cistanche (*Cistanche deserticola* Extract)

Material Lot #: 2019-09-01
Country of Origin: China

Manufacturer Analysis Date: 01/09/2019
Analysis Date: 05/07/2020
Retesting Date: 05/07/2023

Analysis	Claim	Result
Echinacoside	≥22%	23.2%
Acetoside	≥6%	16.1%
Test	Specification	Result
Echinacoside HPLC Assay	≥22%	23.2%
Acetoside HPLC Assay	≥6%	16.1%
ICP-MS		
Arsenic	≤1.5 ppm	0.015 ppm
Lead	≤0.5 ppm	0.014 ppm
Cadmium	≤0.5 ppm	0.005 ppm
Mercury	≤0.5 ppm	<0.001 ppm
Total Aerobic Count	≤1000 cfu/g	Conforms
Yeast & Mold	≤100 cfu/g	Conforms
Coliform	≤10 cfu/g	Conforms
<i>E. coli</i>	Negative	Conforms
Salmonella	Negative	Conforms

Cistanche Deserticola Extract should be stored at or below room temperature in a tightly sealed durable container.
Cistanche Deserticola Extract should be protected from excess heat, direct sunlight, excess humidity, and moisture.
Cistanche Deserticola Extract has a retesting period of 3 years from the date of analysis when properly stored.

Cistanche deserticola



Main Benefits

- *Cistanche deserticola*, also known as "desert Ginseng" or by its Traditional Chinese Medicine (TCM) name "Rou Cong Rong," has been used throughout Asia as a tonic for sexual health, anti-aging, and memory enhancement.
- While the mechanisms are poorly understood, phenylethanoid glycosides Echinacoside and Acetoside are believed to be the primary active compounds. Both interact with Ghrelin receptors and may induce hunger.
- Cistanche sp. may have androgen-like effects and increase bone density, skeletal muscle mass in aging populations, and skin elasticity.

Main Cautions

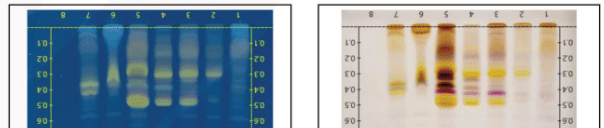
- Some evidence suggests *Cistanche deserticola* Extract may have a sedative effect, so caution is advised before driving or operating heavy machinery.
- *Cistanche deserticola* Extract is generally well tolerated but caution is still advised when investigating higher doses.
- Consult your healthcare provider before use if you have a medical condition or if you are taking any prescription medications.

Usage Tips

- A 0.15cc measuring scoop is included. Two level scoops contains approximately one serving of **200mg Cistanche deserticola** Extract. As a dietary supplement, take 1 serving up to 2 times per day. Start at the lower suggested quantity to assess response.
- There are no known negative side effects attributed to *Cistanche deserticola* Extract, but those using hormonal medications & contraceptives should speak to a doctor before use.
- *Cistanche deserticola* Extract is very hygroscopic in nature and should be kept tightly sealed and away from moisture.
- This supplement is not intended to treat, diagnose, prevent, or cure any diseases. Consult your healthcare provider before use if you have a medical condition or if you are taking any prescription medications.
- It is safe to stack *Cistanche deserticola* Extract with other supplements as long as the amount consumed does not exceed the suggested serving size.
- The benefits of *Cistanche deserticola* Extract are most effective when they are supported by a healthy diet and plenty of exercise.

Work performed at:
 1566 Hoover Street
 Chicago, IL 60641
 714-668-9722 (Fax)
 714-668-9722 (Cell)
 www.alkemist.com

Client:
 Synquest
 47 W. Polk St.
 Chicago, Illinois 60605



Report Issued To: Synquest, 47 W. Polk St., Chicago Illinois 60605

Sample Name: Cistanche extract, Fine Powder
Description: Powdered extract, Fine Powder
Lot #: 20176H1.3
Analysis ID: 139579
Received: 06/24/20

Determination of Total Phenols in Echinacoside by HPLC

Chromatographic Conditions:
 Method: USP 42: Echinacoside Assay
 Column: A92 Prodigy 5μ ODS3 100Å (250 x 4.6 mm)
 Flow Rate: 1.5 mL/min
 Injection Volume: 300nL
 UV Detection: 235 nm
 Mobile Phase: 0.1% phosphoric acid in water
 HPLC Instrument: Alliance 3

Sample Preparation:
 Transferred about 125 mg to a round bottom flask. Added 25 mL 70% ethanol and refluxed with shaking for 15 mins. Filtered into vial for analysis.

Report Summary:
 This "Cistanche desiccata" test sample contains an average of 24% echinacoside on the dried basis.
 Conclusion: N/A
 Loss on Drying: 1.24%
 Note: This method has not been validated for this sample matrix by Alkemist Labs.
Received: 06/24/20
Analysis ID: 139500
Lot #: 20176H1.2
Sample Name: Cistanche desiccata
Description: Powdered extract, Fine Powder
Chicago Illinois 60605

Report Issued To: Synquest, 47 W. Polk St., Chicago Illinois 60605

Sample Name: Cistanche desiccata
Description: Powdered extract, Fine Powder
Lot #: 20176H1.2
Analysis ID: 139500
Received: 06/24/20

Determination of Atecoside Content by HPLC

Chromatographic Conditions:
 Method: EP 10.1 - Lemon Verbena Leaf
 Column: AP19 Luna C18(2) 5μm (250 x 4.0 mm)
 Temperature: 20°C
 Injection Volume: 20 μL
 Flow Rate: 1 mL/min
 Mobile Phase: 0.2% Phosphoric Acid
 HPLC Instrument: Alliance 4

Sample Preparation:
 Mixed sample well and transferred 500 ng to an eppendorf flask. Added 25.0 mL of the standard solution. Mixed with a magnetic stirrer for 2 hours. Centrifuged 10 minutes and filtered into vials for analysis.

Report Summary:
 This "Cistanche desiccata" test sample contains an average of 15% atecoside on the dry basis.
 Conclusion: N/A
 Loss on Drying: 1.24%
 Note: This method has not been validated for this sample matrix by Alkemist Labs.
Empower File: 19120 Atecoside

Report Issued To: Synquest, 47 W. Polk St., Chicago, IL 60654

Sample Collected By: Client
Product Name: Cistanche Tubulosa
Report Date: 05/07/20
Laboratory Number: 20030046

Client: Synquest LLC
 47 W Polk Street, 100-241
 Chicago, IL 60654

Method: UV-vis
Result: 39.1%
Description: Lead
Method: ICP-MS
Result: 0.014 ppm
Description: Arsenic
Method: ICP-MS
Result: 0.005 ppm
Description: Cadmium
Method: ICP-MS
Result: <0.001 ppm
Description: Mercury
Method: ICP-MS
Result: <1.000 cfu/g
Description: Total Aerobic Count
Method: Biolumix
Result: Absent
Description: Yeast and Mold
Method: Biolumix
Result: Absent
Description: E. Coli
Method: Biolumix
Result: Absent
Description: Salmonella
Method: Biolumix
Result: Absent

Method: UV-vis
Result: 39.1%
Description: Glycerols
Method: ICP-MS
Result: 0.014 ppm
Description: Lead
Method: ICP-MS
Result: 0.005 ppm
Description: Arsenic
Method: ICP-MS
Result: <0.001 ppm
Description: Cadmium
Method: ICP-MS
Result: <1.000 cfu/g
Description: Total Aerobic Count
Method: Biolumix
Result: Absent
Description: Yeast and Mold
Method: Biolumix
Result: Absent
Description: E. Coli
Method: Biolumix
Result: Absent
Description: Salmonella
Method: Biolumix
Result: Absent

Report Issued To: Synquest, 47 W. Polk St., Chicago, IL 60605

Sample Name: Cistanche desiccata
Description: Powdered extract, Fine Powder
Lot #: 20176H1.2
Analysis ID: 139500
Received: 06/24/20

Determination of Atecoside Content by HPLC

Chromatographic Conditions:
 Method: EP 10.1 - Lemon Verbena Leaf
 Column: AP19 Luna C18(2) 5μm (250 x 4.0 mm)
 Temperature: 20°C
 Injection Volume: 20 μL
 Flow Rate: 1 mL/min
 Mobile Phase: 0.2% Phosphoric Acid
 HPLC Instrument: Alliance 4

Sample Preparation:
 Mixed sample well and transferred 500 ng to an eppendorf flask. Added 25.0 mL of the standard solution. Mixed with a magnetic stirrer for 2 hours. Centrifuged 10 minutes and filtered into vials for analysis.

Report Summary:
 This "Cistanche desiccata" test sample contains an average of 15% atecoside on the dry basis.
 Conclusion: N/A
 Loss on Drying: 1.24%
 Note: This method has not been validated for this sample matrix by Alkemist Labs.
Empower File: 19120 Atecoside

ALKEMIST LABS **CERTIFICATE OF ANALYSIS**

12661 Hoover Street, Cary, NC, USA 27513 | P: 714-754-4372 | F: 714-668-9722 | www.alkemist.com

Report Issued To: Synquest, 47 W. Polk St., Chicago, IL 60605

Sample Name: Cistanche desiccata
Description: Powdered extract, Fine Powder
Lot #: 20176H1.2
Analysis ID: 139500
Received: 06/24/20

Determination of Atecoside Content by HPLC

Chromatographic Conditions:
 Method: EP 10.1 - Lemon Verbena Leaf
 Column: AP19 Luna C18(2) 5μm (250 x 4.0 mm)
 Temperature: 20°C
 Injection Volume: 20 μL
 Flow Rate: 1 mL/min
 Mobile Phase: 0.2% Phosphoric Acid
 HPLC Instrument: Alliance 4

Sample Preparation:
 Mixed sample well and transferred 500 ng to an eppendorf flask. Added 25.0 mL of the standard solution. Mixed with a magnetic stirrer for 2 hours. Centrifuged 10 minutes and filtered into vials for analysis.

Report Summary:
 This "Cistanche desiccata" test sample contains an average of 15% atecoside on the dry basis.
 Conclusion: N/A
 Loss on Drying: 1.24%
 Note: This method has not been validated for this sample matrix by Alkemist Labs.
Empower File: 19120 Atecoside

ALKEMIST LABS **CERTIFICATE OF ANALYSIS**

12661 Hoover Street, Cary, NC, USA 27513 | P: 714-754-4372 | F: 714-668-9722 | www.alkemist.com

Report Issued To: Synquest, 47 W. Polk St., Chicago, IL 60605

Sample Name: Cistanche desiccata
Description: Powdered extract, Fine Powder
Lot #: 20176H1.2
Analysis ID: 139500
Received: 06/24/20

Determination of Atecoside Content by HPLC

Chromatographic Conditions:
 Method: EP 10.1 - Lemon Verbena Leaf
 Column: AP19 Luna C18(2) 5μm (250 x 4.0 mm)
 Temperature: 20°C
 Injection Volume: 20 μL
 Flow Rate: 1 mL/min
 Mobile Phase: 0.2% Phosphoric Acid
 HPLC Instrument: Alliance 4

Sample Preparation:
 Mixed sample well and transferred 500 ng to an eppendorf flask. Added 25.0 mL of the standard solution. Mixed with a magnetic stirrer for 2 hours. Centrifuged 10 minutes and filtered into vials for analysis.

Report Summary:
 This "Cistanche desiccata" test sample contains an average of 15% atecoside on the dry basis.
 Conclusion: N/A
 Loss on Drying: 1.24%
 Note: This method has not been validated for this sample matrix by Alkemist Labs.
Empower File: 19120 Atecoside

ALKEMIST LABS **CERTIFICATE OF ANALYSIS**

12661 Hoover Street, Cary, NC, USA 27513 | P: 714-754-4372 | F: 714-668-9722 | www.alkemist.com

Report Issued To: Synquest, 47 W. Polk St., Chicago, IL 60605

Sample Name: Cistanche desiccata
Description: Powdered extract, Fine Powder
Lot #: 20176H1.2
Analysis ID: 139500
Received: 06/24/20

Determination of Atecoside Content by HPLC

Chromatographic Conditions:
 Method: EP 10.1 - Lemon Verbena Leaf
 Column: AP19 Luna C18(2) 5μm (250 x 4.0 mm)
 Temperature: 20°C
 Injection Volume: 20 μL
 Flow Rate: 1 mL/min
 Mobile Phase: 0.2% Phosphoric Acid
 HPLC Instrument: Alliance 4

Sample Preparation:
 Mixed sample well and transferred 500 ng to an eppendorf flask. Added 25.0 mL of the standard solution. Mixed with a magnetic stirrer for 2 hours. Centrifuged 10 minutes and filtered into vials for analysis.

Report Summary:
 This "Cistanche desiccata" test sample contains an average of 15% atecoside on the dry basis.
 Conclusion: N/A
 Loss on Drying: 1.24%
 Note: This method has not been validated for this sample matrix by Alkemist Labs.
Empower File: 19120 Atecoside

ALKEMIST LABS **CERTIFICATE OF ANALYSIS**

12661 Hoover Street, Cary, NC, USA 27513 | P: 714-754-4372 | F: 714-668-9722 | www.alkemist.com

Report Issued To: Synquest, 47 W. Polk St., Chicago, IL 60605

Sample Name: Cistanche desiccata
Description: Powdered extract, Fine Powder
Lot #: 20176H1.2
Analysis ID: 139500
Received: 06/24/20

Determination of Atecoside Content by HPLC

Chromatographic Conditions:
 Method: EP 10.1 - Lemon Verbena Leaf
 Column: AP19 Luna C18(2) 5μm (250 x 4.0 mm)
 Temperature: 20°C
 Injection Volume: 20 μL
 Flow Rate: 1 mL/min
 Mobile Phase: 0.2% Phosphoric Acid
 HPLC Instrument: Alliance 4

Sample Preparation:
 Mixed sample well and transferred 500 ng to an eppendorf flask. Added 25.0 mL of the standard solution. Mixed with a magnetic stirrer for 2 hours. Centrifuged 10 minutes and filtered into vials for analysis.

Report Summary:
 This "Cistanche desiccata" test sample contains an average of 15% atecoside on the dry basis.
 Conclusion: N/A
 Loss on Drying: 1.24%
 Note: This method has not been validated for this sample matrix by Alkemist Labs.
Empower File: 19120 Atecoside

ALKEMIST LABS **CERTIFICATE OF ANALYSIS**

12661 Hoover Street, Cary, NC, USA 27513 | P: 714-754-4372 | F: 714-668-9722 | www.alkemist.com

Report Issued To: Synquest, 47 W. Polk St., Chicago, IL 60605

Sample Name: Cistanche desiccata
Description: Powdered extract, Fine Powder
Lot #: 20176H1.2
Analysis ID: 139500
Received: 06/24/20

Determination of Atecoside Content by HPLC

Chromatographic Conditions:
 Method: EP 10.1 - Lemon Verbena Leaf
 Column: AP19 Luna C18(2) 5μm (250 x 4.0 mm)
 Temperature: 20°C
 Injection Volume: 20 μL
 Flow Rate: 1 mL/min
 Mobile Phase: 0.2% Phosphoric Acid
 HPLC Instrument: Alliance 4

Sample Preparation:
 Mixed sample well and transferred 500 ng to an eppendorf flask. Added 25.0 mL of the standard solution. Mixed with a magnetic stirrer for 2 hours. Centrifuged 10 minutes and filtered into vials for analysis.

Report Summary:
 This "Cistanche desiccata" test sample contains an average of 15% atecoside on the dry basis.
 Conclusion: N/A
 Loss on Drying: 1.24%
 Note: This method has not been validated for this sample matrix by Alkemist Labs.
Empower File: 19120 Atecoside

ALKEMIST LABS **CERTIFICATE OF ANALYSIS**

12661 Hoover Street, Cary, NC, USA 27513 | P: 714-754-4372 | F: 714-668-9722 | www.alkemist.com

Report Issued To: Synquest, 47 W. Polk St., Chicago, IL 60605

Sample Name: Cistanche desiccata
Description: Powdered extract, Fine Powder
Lot #: 20176H1.2
Analysis ID: 139500
Received: 06/24/20

Determination of Atecoside Content by HPLC

Chromatographic Conditions:
 Method: EP 10.1 - Lemon Verbena Leaf
 Column: AP19 Luna C18(2) 5μm (250 x 4.0 mm)
 Temperature: 20°C
 Injection Volume: 20 μL
 Flow Rate: 1 mL/min
 Mobile Phase: 0.2% Phosphoric Acid
 HPLC Instrument: Alliance 4

Sample Preparation:
 Mixed sample well and transferred 500 ng to an eppendorf flask. Added 25.0 mL of the standard solution. Mixed with a magnetic stirrer for 2 hours. Centrifuged 10 minutes and filtered into vials for analysis.

Report Summary:
 This "Cistanche desiccata" test sample contains an average of 15% atecoside on the dry basis.
 Conclusion: N/A
 Loss on Drying: 1.24%
 Note: This method has not been validated for this sample matrix by Alkemist Labs.
Empower File: 19120 Atecoside