



LIFTMODE
47 W. Polk St. STE 100-241
Chicago, IL 60605

liftmode@liftmode.com
www.liftmode.com

CERTIFICATE OF ANALYSIS

Phenibut Free Amino Acid

(β-phenyl-γ-aminobutyric acid)

Material Lot #: 181229 Manufacture Date: 12/20/2018
Country of Origin: China Expiration Date: 12/19/2021

Analysis	Claim	Result
Phenibut FAA	≥99 %	99.38%

Test	Specification	Result
Appearance	White or almost white powder	Complies
Loss on Drying	≤0.5%	0.29%
Sulfate	≤0.05%	Complies
Related Substances	≤0.5%	0.31%
Heavy Metals	<10 ppm	Complies
Iron	<60 ppm	Complies
Lead	<1 ppm	Complies
Arsenic	<1 ppm	Complies
Cadmium	<1 ppm	Complies
Mercury	<1 ppm	Complies
Total Plate Count	<1000 cfu/g	90 cfu/g
Yeast & Mold	<100 cfu/g	25 cfu/g
E. Coli	Negative	Complies
Salmonella	Negative	Complies

Phenibut FAA should be stored at or below room temperature in a tightly sealed durable container.
Phenibut FAA should be protected from excess heat, direct sunlight, excess humidity and moisture.
Phenibut FAA has a stable shelf life of 3 years from the date of manufacture when properly stored.



812 Meadow Lark Lane, Goodlettsville, TN 37072
Telephone: 615-239-8604

Certificate of Analysis

Synaptent LLC

Product Name	Phenibut FAA	Product Lot Number	181229
Report Date	02/04/2019	Laboratory Number	11372

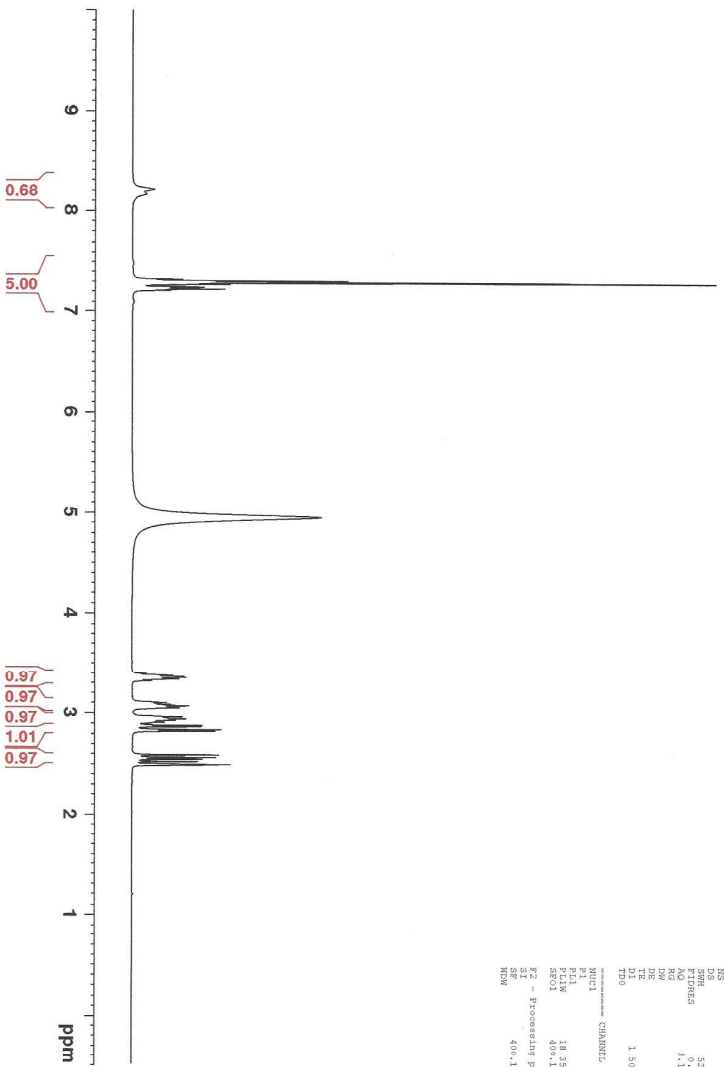
Description	Method	Result
Identification	Proton NMR	Conforms to structure
Assay	HPLC	98.5%
Lead	ICP-MS USP <730>	0.421 ppm
Arsenic	ICP-MS USP <730>	<0.001 ppm
Cadmium	ICP-MS USP <730>	0.004 ppm
Mercury	ICP-MS USP <730>	0.001 ppm
Total Aerobic Count	Biolumix	<100 CFU/g
Yeast and Mold	Biolumix	<100 CFU/g
E. coli	Biolumix	Absent
Coliform	Biolumix	<10 CFU/g
Salmonella	Biolumix	Absent

Collin Thomas *Collin Thomas*
Laboratory Manager

02/04/2019 *2/4/19*
Date

The result(s) stated in this report is only for the sample submitted. This report may not be reproduced in whole or in part, nor may any reference be made to the work, the result, or the company in any news release, public announcements or advertising without our prior written consent.

¹H NMR of Phenibut FAA
 In DMSO-d₆
 Lot #11372
 Colmaric Analytical
 400 MHz
 01-23-19



```

Current Data Parameters
NAME      Jm123-2019-colmaric
PROCNO    1
===== CHANNEL F1 =====
NUC1      1H
P1        11.38 usec
P2        18.38 usec
P3        18.38 usec
P4        18.38 usec
P5        18.38 usec
P6        18.38 usec
P7        18.38 usec
P8        18.38 usec
P9        18.38 usec
P10       18.38 usec
P11       18.38 usec
P12       18.38 usec
P13       18.38 usec
P14       18.38 usec
P15       18.38 usec
P16       18.38 usec
P17       18.38 usec
P18       18.38 usec
P19       18.38 usec
P20       18.38 usec
P21       18.38 usec
P22       18.38 usec
P23       18.38 usec
P24       18.38 usec
P25       18.38 usec
P26       18.38 usec
P27       18.38 usec
P28       18.38 usec
P29       18.38 usec
P30       18.38 usec
P31       18.38 usec
P32       18.38 usec
P33       18.38 usec
P34       18.38 usec
P35       18.38 usec
P36       18.38 usec
P37       18.38 usec
P38       18.38 usec
P39       18.38 usec
P40       18.38 usec
P41       18.38 usec
P42       18.38 usec
P43       18.38 usec
P44       18.38 usec
P45       18.38 usec
P46       18.38 usec
P47       18.38 usec
P48       18.38 usec
P49       18.38 usec
P50       18.38 usec
=====
Date_      2019123
Time_     09:27:40
INSTRUM   spect
PROBHD    5 mm PABBO BB
P1        11.38 usec
TD        32768
RG        655.36
AQ        0.00320000
RG2       655.36
RG3       655.36
RG4       655.36
RG5       655.36
RG6       655.36
RG7       655.36
RG8       655.36
RG9       655.36
RG10      655.36
RG11      655.36
RG12      655.36
RG13      655.36
RG14      655.36
RG15      655.36
RG16      655.36
RG17      655.36
RG18      655.36
RG19      655.36
RG20      655.36
RG21      655.36
RG22      655.36
RG23      655.36
RG24      655.36
RG25      655.36
RG26      655.36
RG27      655.36
RG28      655.36
RG29      655.36
RG30      655.36
RG31      655.36
RG32      655.36
RG33      655.36
RG34      655.36
RG35      655.36
RG36      655.36
RG37      655.36
RG38      655.36
RG39      655.36
RG40      655.36
RG41      655.36
RG42      655.36
RG43      655.36
RG44      655.36
RG45      655.36
RG46      655.36
RG47      655.36
RG48      655.36
RG49      655.36
RG50      655.36
=====
F2 - Acquisition Parameters
Date_     2019123
Time_     09:27:40
INSTRUM   spect
PROBHD    5 mm PABBO BB
P1        11.38 usec
TD        32768
RG        655.36
AQ        0.00320000
RG2       655.36
RG3       655.36
RG4       655.36
RG5       655.36
RG6       655.36
RG7       655.36
RG8       655.36
RG9       655.36
RG10      655.36
RG11      655.36
RG12      655.36
RG13      655.36
RG14      655.36
RG15      655.36
RG16      655.36
RG17      655.36
RG18      655.36
RG19      655.36
RG20      655.36
RG21      655.36
RG22      655.36
RG23      655.36
RG24      655.36
RG25      655.36
RG26      655.36
RG27      655.36
RG28      655.36
RG29      655.36
RG30      655.36
RG31      655.36
RG32      655.36
RG33      655.36
RG34      655.36
RG35      655.36
RG36      655.36
RG37      655.36
RG38      655.36
RG39      655.36
RG40      655.36
RG41      655.36
RG42      655.36
RG43      655.36
RG44      655.36
RG45      655.36
RG46      655.36
RG47      655.36
RG48      655.36
RG49      655.36
RG50      655.36
=====
F2 - Processing parameters
Date_     2019123
Time_     09:27:40
INSTRUM   spect
PROBHD    5 mm PABBO BB
P1        11.38 usec
TD        32768
RG        655.36
AQ        0.00320000
RG2       655.36
RG3       655.36
RG4       655.36
RG5       655.36
RG6       655.36
RG7       655.36
RG8       655.36
RG9       655.36
RG10      655.36
RG11      655.36
RG12      655.36
RG13      655.36
RG14      655.36
RG15      655.36
RG16      655.36
RG17      655.36
RG18      655.36
RG19      655.36
RG20      655.36
RG21      655.36
RG22      655.36
RG23      655.36
RG24      655.36
RG25      655.36
RG26      655.36
RG27      655.36
RG28      655.36
RG29      655.36
RG30      655.36
RG31      655.36
RG32      655.36
RG33      655.36
RG34      655.36
RG35      655.36
RG36      655.36
RG37      655.36
RG38      655.36
RG39      655.36
RG40      655.36
RG41      655.36
RG42      655.36
RG43      655.36
RG44      655.36
RG45      655.36
RG46      655.36
RG47      655.36
RG48      655.36
RG49      655.36
RG50      655.36
=====
  
```