

LIFTMODE

LIFTMODE
47 W. Polk St. STE 100-241
Chicago, IL 60605

liftmode@liftmode.com
www.liftmode.com

CERTIFICATE OF ANALYSIS

Rhodiola Rosea

(Arctic Root)

Material Lot #: RHO16-160623

Manufacture Date: 06/23/2017

Country of Origin: China

Expiration Date: 06/23/2020

Analysis	Claim	Result
Rosavins	$\geq 5.0\%$	5.15%
Salidroside	$\geq 2.0\%$	3.05%

Test	Specification	Result
Appearance	Red brown powder	Complies
Odor	Characteristic	Complies
Taste	Characteristic	Complies
Heavy Metals	<10 ppm	Complies
Lead	<1.0 ppm	Complies
Arsenic	<1.0 ppm	Complies
Cadmium	<0.1 ppm	Complies
Mercury	<0.1 ppm	Complies
Total Plate Count	<3,000 CFU/g	<10 CFU/g
Yeast & Mold	<300 CFU/g	<10 CFU/g
Coliforms	<10 CFU/g	<10 CFU/g
Bile-Tolerant Gram-Negative Bacteria	<100 CFU/g	<100 CFU/g
E.Coli	Negative	Complies
Samoniella	Negative	Complies
Staphylococcus	Negative	Complies
Pseudomonas	Negative	Complies
Staphylococcus Aureus	Negative	Complies

Rhodiola Rosea should be stored at or below room temperature in a tightly sealed durable container. Rhodiola Rosea should be protected from excess heat, direct sunlight, excess humidity and moisture. Rhodiola Rosea has a stable shelf life of 3 years from the date of manufacture when properly stored.

LIFTMODE

LIFTMODE
47 W. Polk St. STE 100-241
Chicago, IL 60605

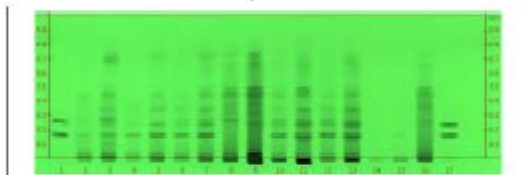
liftmode@liftmode.com
www.liftmode.com

Certificate Issued To:
Synpment
660 W. Grand Ave Ste 1E
Chicago, IL 60654



Work performed at:
Alkermid Labs
1285 Logan Ave #2
Coppell Texas, TX 75028
714-714-9888 (EXT)
714-444-6979 (Fax)
Sales@Alkermid.com
www.Akermid.com

Certificate of Analysis: *Rhodiola rosea* (160623)
High Performance Thin-Layer Chromatography with Photo-Documentation



Company Name:
Title:
Plant Part:
Appearance:
Sample Packaging:

Synpment
Rhodiola rosea
Rhodiola
Hb0 Brown powder
Clear Resealable Plastic bag

Sample Received:
Form of Material:
Lot Number:
Sample:

05/15/17
powdered extract
1026251-81 lots 1000 Aul, 1111 Aul
KJ222151NPL1

Lot Number:
Reference Sample:

Rhodiola rosea L. [Fam. Rosaceae]
Lane 2[5ul] (P000215AF1), Lane 3[5ul] (P017400C1B1) *Rhodiola rosea* (root), Lane 16[5ul] (AV95010112W11)
Rhodiola crenulata (root); field of Alkermid Labs, Costa Mesa, CA.

Analyt:
Sample Preparation:
Stationary Phase:
Mobile Phase:
Detection:

A. Davis, N. Hoang, P. Fast, N. Akhmedovs, E. Tran, S. Eshber, E. Corcos, M. Lababidi, J. Nguyen, W0140
0.00137L /10% acetonitrile in 0.1M phosphate buffer of pH 7.0 for 30 min.
WAS 60:40 AL HPPL: 60MM
ethyl acetate: methanol: water (1:1:1.4:1)

Reference Standard:
Reference Source:

(1) UV 264 nm
(2) Vanillin/Sulfuric Acid Reagent, heat at 110°C for 2 min, UV 366 nm
Lane 1[5ul] and 17[5ul] Rosavin (00018246-4922, CHE), Salidroside (0728188, VWR), Salidroside (1 P89-114, CHE),
Rosafuran (0028188, VWR), Rosogonin (00018369-642, CHE)
ATM:7180166
INT:626-3540

Comments & Conclusions: Lanes 10, 11 are the test sample *Rhodiola rosea* (160623). Lanes 2, 3, 16, 17 are the reference samples used for comparison. This test sample, *Rhodiola rosea* (160623) is consistent with the chromatographic profile of the reference samples of *Rhodiola rosea* used. **Lot Number: 1026251-81 lots 1000 Aul, 1111 Aul. This test sample *Rhodiola rosea* (160623) has characteristics of *Rhodiola rosea* rhizome.**