



LIFTMODE
47 W. Polk St. STE 100-241
Chicago, IL 60605

liftmode@liftmode.com
www.liftmode.com

CERTIFICATE OF ANALYSIS

SALG (S-Acetyl L-Glutathione)

Material Lot #: 1808230
Country of Origin: China

Manufacture Date: 08/02/2018
Expiration Date: 07/30/2021

Analysis	Claim	Result
SALG	≥98.0%	98.2%

Test	Specification	Result
Appearance	White crystalline powder	Complies
Assay	≥98.0%	98.2%
L-Glutathione	≤1.0%	0.7%
Loss on Drying	≤0.5%	0.3%
Residual on Ignition	≤0.2%	0.1%
Heavy Metal	≤10ppm	Complies
Ammonium	≤200ppm	Complies
Chlorides	≤200ppm	Complies
Iron	≤10ppm	Complies
Sulfate	≤300ppm	Complies
Acetone	≤0.2%	0.03%
Total Plate Count	≤1,000 cfu/g	Negative
Yeast and Mold	≤100 cfu/g	Negative
E.Coli	Negative	Negative
Salmonella	Negative	Negative

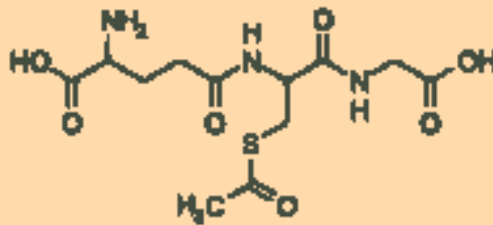
SALG should be stored at or below room temperature in a tightly sealed durable container. SALG should be protected from excess heat, direct sunlight, excess humidity and moisture. SALG has a stable shelf life of 3 years from the date of manufacture when properly stored.

LIFTMODE

LIFTMODE
47 W. Polk St. STE 100-241
Chicago, IL 60605

liftmode@liftmode.com
www.liftmode.com

SALG (S-ACETYL L-GLUTATHIONE)



Main Benefits

- SALG can be supplemented to combat the reducing production of Glutathione in the body. Glutathione is a very potent antioxidant in the body; SALG being one of the most potent variants of Glutathione available.
- SALG has been shown to support and improve the functioning of a healthy immune system.
- SALG has also been shown to help in neutralizing free radicals in the body and in detoxifying the liver.

Main Cautions

- SALG is typically very well tolerated within the body when taken at the recommended serving size. Adverse effects are rarely reported, especially when administered orally.
- Although SALG is a relatively safe supplement, we still highly suggest that you do not exceed the recommended serving size.
- Consult your physician before using SALG if you are taking any medication. SALG has not been tested for safe usage in pregnant or breast-feeding women.

Usage Tips

- A 0.15cc measuring scoop is included. One level scoop contains approximately one serving, or approximately **100mg of SALG**. As a dietary supplement, take 1-2 servings up to 2 times per day. Start at the lower suggested quantity to assess response.
- The negative effects of SALG are dependent on the amount taken, so use of a scale with 10mg/0.01g accuracy is recommended for reliable measurement.
- Use of capsules, or mixing with tea, yogurt, apple sauce, or oatmeal may help make the powder more tolerable.
- This supplement is not intended to treat, diagnose, prevent, or cure any diseases. Consult your healthcare provider before use if you have a medical condition or if you are taking any prescription medications.
- It is safe to stack SALG with other supplements, so long as the amount consumed does not exceed the suggested serving size.
- The benefits of SALG are most effective when they are supported by a healthy diet and plenty of exercise.



812 Meadowlark Lane, Goodlettsville, TN 37072
Telephone: 615-239-8604

Certificate of Analysis

Synaptent LLC
47 W Polk Street, 100-241
Chicago, IL 60654

Product Name	S-Acetyl L-Glutathione	Product Lot Number	1808230
Report Date	11/07/2018	Laboratory Number	11057

Description	Method	Result
Identification	¹ H NMR	Conforms
Assay	HPLC	98.9 %
Lead	ICP-MS	0.022 ppm
Arsenic	ICP-MS	< 0.001 ppm
Cadmium	ICP-MS	0.007 ppm
Mercury	ICP-MS	0.052 ppm

Michael Robil

Michael Robil
QA Auditor

11/07/18
11/07/2018
Date

The result(s) stated in this report is only for the sample submitted. This report may not be reproduced in whole or in part, nor may any reference be made to the work, the result, or the company in any news release, public announcements or advertising without our prior written consent.

1H NMR of S-acetyl-L-glutathione
in D2O/DCI
Lot #11057
Colmaric Analytical
400 MHz
10-29-18

```
=====
          DATA PARAMETERS
=====
NAME: 10-29-18-102918
EXPNO: 2
PROCNO: 1
PC: Acquisition Parameters
DATE_: 20181029
TIME: 16.41
INSTRUM: spect
PROBHD: 5 mm QNP5
PULPROG: zgpg30
SOLVENT: D2O
NS: 320
DS: 4
SWH: 5026.13 Hz
FIDRES: 0.18866 Hz
AQ: 0.2187281 sec
RG: 31
AQ: 0.2187281 sec
TD: 65536
TE: 300.2 K
SI: 32768
SF: 400.146000 MHz
=====
          CHANNEL f1
=====
NUC1: 1H
P1: 12.50 usec
PL1: 0.00 dB
PL2: 19.14 dB
PL3: 19.14 dB
PL4: 19.14 dB
PC: Processing parameters
SI: 32768
SF: 400.146000 MHz
WDW: EM
SSB: 0
LB: 30.000000 Hz
GB: 0
PC: 0.000000 sec
=====
```

