



LIFTMODE
47 W. Polk St. STE 100-241
Chicago, IL 60605

liftmode@liftmode.com
www.liftmode.com

CERTIFICATE OF ANALYSIS

Taurine

(2-Aminoethane-1-sulfonic acid)

Material Lot #:	1806522	Manufacture Date:	06/14/2018
Country of Origin:	China	Retesting Date:	06/13/2021

Analysis	Claim	Result
Taurine	≥99.0%	99.7%

Test	Specification	Result
Appearance	Colorless or white crystalline powder	Complies
Clarity of Solution	Clear and colorless	Complies
PH	4.1-5.6	5.0
Heavy Metals	≤10 ppm	Complies
Mercury	≤0.5 ppm	Complies
Lead	≤1 ppm	Complies
Arsenic	≤0.5 ppm	Complies
Cadmium	≤0.5 ppm	Complies
Sulfate	≤0.01 ppm	Complies
Iron	≤10 ppm	Complies
Ammonium	≤0.02%	Complies
Related Substances	≤0.2%	Complies
Loss on Drying	≤0.2%	0.1%
Residue on Ignition	≤0.1%	0.07%
Total Plate Count	≤1,000 cfu/g	Negative
Yeast & Mold	≤100 cfu/g	Negative
E.coli	Negative	Negative
Salmonella	Negative	Negative
Assay	≥99.0%	99.7

Taurine should be stored at or below room temperature in a tightly sealed durable container. Taurine should be protected from excess heat, direct sunlight, excess humidity and moisture. Taurine has a stable shelf life of 3 years from the date of manufacture when properly stored.



LIFTMODE
47 W. Polk St. STE 100-241
Chicago, IL 60605

liftmode@liftmode.com
www.liftmode.com

CERTIFICATE OF ANALYSIS

Product Name	Taurine	Product Lot Number	C002-YB1806522
Report Date	09/14/2018	Laboratory Number	10796

Description	Method	Results
Identification	TLC	Positive
Assay	Titration	99.6 %
Lead	ICP-MS	0.020 ppm
Arsenic	ICP-MS	<0.001 ppm
Cadmium	ICP-MS	<0.001 ppm
Mercury	ICP-MS	0.023 ppm

Main Benefits

- Taurine is an "semi-essential" amino acid used in a wide variety of biochemical pathways in the body, including protein synthesis.
- Its wide variety of benefits range include reduced stress levels, increased energy, support of a healthy metabolism, and improved libido.
- Taurine acts as a powerful antioxidant, removing "free-radicals" and LDL cholesterol from the blood, supporting a healthy circulatory system.

Main Cautions

- Taurine supplements are considered highly safe and effective and generally without noticeable adverse effects at the recommended serving size.
- Please consult your doctor before using Taurine if you have any underlying medical conditions or are using any medication.
- There is insufficient information regarding safety of Taurine supplements for pregnant and breast-feeding women.

TAURINE

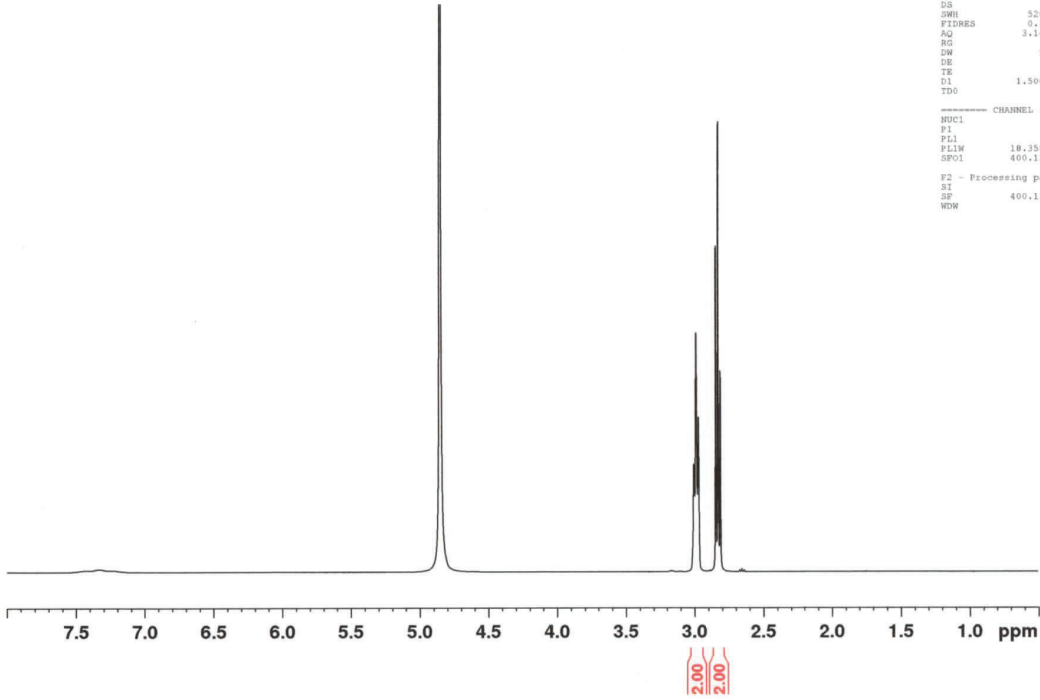
NC(CS(=O)(=O)O)C

Usage Tips

- A 1.7cc measuring scoop is included. One level scoop contains approximately one serving, or approximately **1500mg of Taurine**. As a dietary supplement, take 1-2 servings 1-2 times per day. Start at the lower suggested quantity to assess response.
- The negative effects of Taurine are dependent on the amount taken, so use of a scale with 10mg/0.01g accuracy or better is highly recommended.
- Use of capsules, or mixing with tea, yogurt, apple sauce, or oatmeal may help make the powder more tolerable.

- This supplement is not intended to treat, diagnose, prevent, or cure any diseases. Consult your healthcare provider before use if you have a medical condition or if you are taking any prescription medications.
- It is safe to stack Taurine with other supplements, so long as the amount consumed does not exceed the suggested serving size.
- The benefits of Taurine are most effective when they are supported by a healthy diet and plenty of exercise.

1H NMR of Taurine
in D2O/DCI
Lot #10954
Colmaric Analytical
400 MHz
10-08-18



```
Current Data Parameters
NAME      Oct08-2018-colmaric
EXPNO    1
PROCNO   1

F2 - Acquisition Parameters
Date_    20181008
Time     11:53
INSTRUM  spect
PROBHD   5 mm PABBO 3H-
PULPROG  zg30
TD        32768
SOLVENT  D2O
NS        32
DS        0
SWH       5208.333 Hz
FIDRES    0.138844 Hz
AQ        3.1457281 sec
RG         64
DM        96.000 usec
DE        25.61 usec
TE        296.0 K
D1        1.5000000 sec
TDO       1

----- CHANNEL f1 -----
NUC1      1H
P1        12.00 usec
PL1       -2.50 dB
PL12      18.3586938 W
SFO1      400.1326007 MHz

F2 - Processing parameters
SI        32768
SF        400.1300645 MHz
WDW       EM
```



Colmaric Analyticals, LLC

812 Meadowlark Lane, Goodlettsville, TN 37072
Telephone: 615-239-8604

Certificate of Analysis

Synaptent LLC
47 W Polk Street, 100-241
Chicago, IL 60654

Product Name	Taurine	Product Lot Number	1806522
Report Date	10/10/2018	Laboratory Number	10954
Description		Method	Result
Identification		1H NMR	Conforms
Assay		Titration	100.4 %
Lead		ICP-MS	0.006 ppm
Arsenic		ICP-MS	<0.001 ppm
Cadmium		ICP-MS	<0.001 ppm
Mercury		ICP-MS	0.045 ppm
Total Aerobic Count		Biolumix	<100 CFU/g
Yeast and Mold		Biolumix	<100 CFU/g
E. Coli		Biolumix	Absent
Coliform		Biolumix	<10 CFU/g
Salmonella		Biolumix	Absent

Michael Robil
Michael Robil
QA Auditor

10/10/18
10/10/2018
Date

The result(s) stated in this report is only for the sample submitted. This report may not be reproduced in whole or in part, nor may any reference be made to the work, the result, or the company in any news release, public announcements or advertising without our prior written consent.