



NEWMIND  
47 W. Polk St. STE 100-241  
Chicago, IL 60605

newmind@newmind.com  
www.newmind.com

## CERTIFICATE OF ANALYSIS

### Emoxypine Succinate (Ethy/methylhydroxypyridine Succinate)

Material Lot #: 17112001      Manufacture Date: 11/20/2017  
Country of Origin: China      Retesting Date: 11/19/2020

Analysis	Claim	Result
Emoxypine Succinate	>98.0%	>98.92%
<b>Test</b>	<b>Claim</b>	<b>Result</b>
Appearance	Off-white or white crystalline powder.	Conforms
Solubility	Freely soluble in water. Soluble in methanol & alcohol.	Conforms
Light Transmittance	≥95.0%	98.74%
pH	4.0-6.0	4.55
Total Impurities	≤ 1.0%	0.010%
Loss on Drying	≤ 1.0%	0.09%
Residue on Ignition	≤ 0.1%	0.03%
Heavy Metals	≤ 10 ppm	Conforms
Residual Solvents		
Ethanol	≤ 0.5%	Not Detected
Isopropanol	≤ 0.5%	0.0293%
Ethyl acetate	≤ 0.5%	Not Detected

Emoxypine should be stored at or below room temperature in a tightly sealed durable container. EMOXPINE should be protected from excess heat, direct sunlight, excess humidity and moisture. EMOXPINE has a stable shelf life of 3 years from the date of testing when properly stored.



NEWMIND  
47 W. Polk St. STE 100-241  
Chicago, IL 60605

newmind@newmind.com  
www.newmind.com

## CERTIFICATE OF ANALYSIS

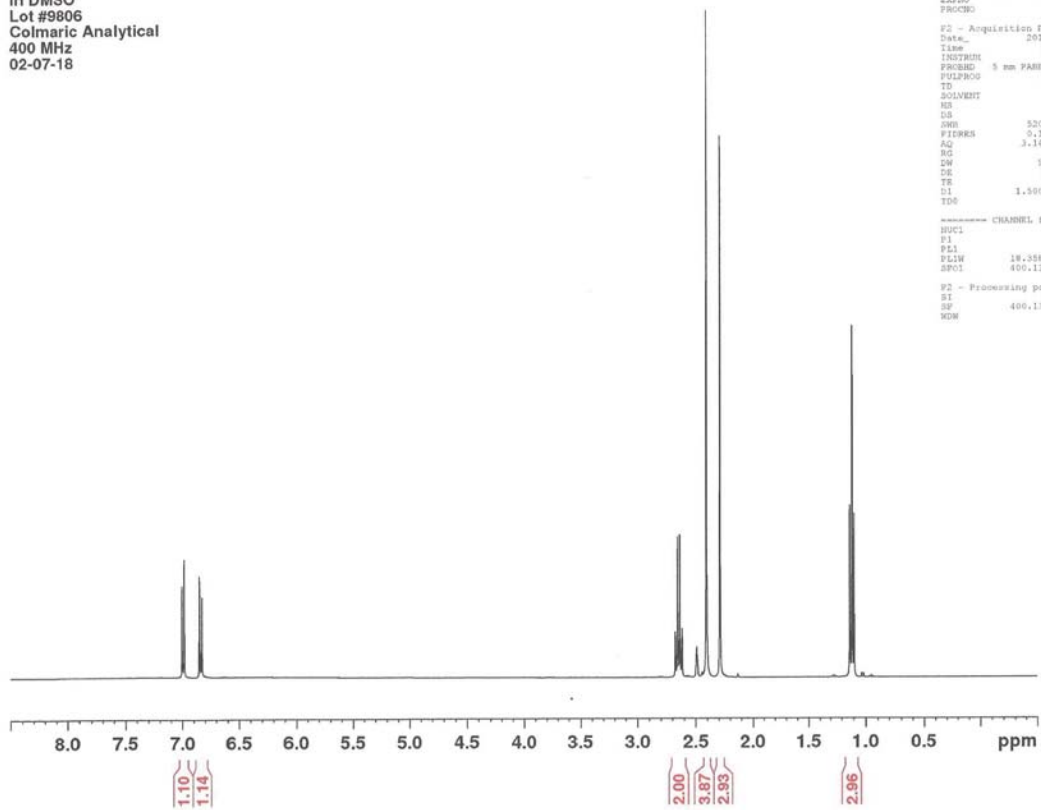
Product Name	Emoxypine Succinate	Client Lot Number	17112001
Report Date	02/08/18	Laboratory #	9806

Test	Method	Result
Identification	Proton NMR	Conforms to structure
Assay	HPLC	99.1%
Lead	ICP-MS USP <730>	0.827 ppm
Arsenic	ICP-MS USP <730>	<0.001 ppm
Cadmium	ICP-MS USP <730>	0.063 ppm
Mercury	ICP-MS USP <730>	0.019 ppm

*Collin Thomas*  
Laboratory Manager

02/08/2018 2/8/17  
Date

**1H NMR of Emoxypine Succinate**  
**in DMSO**  
**Lot #9806**  
**Colmaric Analytical**  
**400 MHz**  
**02-07-18**



```

Current Data Parameters
NAME      Feb07-2018-colmaric
EXPNO    1
PROCNO   1

F2 - Acquisition Parameters
Date_    20180207
Time     13.42
INSTRUM  spect
PROBHD   5 mm PABBO B0-
PULPROG  zg30
TD       32768
SOLVENT  DMSO
NS       32
DS       4
SWH      5208.333 Hz
FIDRES   0.188946 Hz
AQ       3.1457281 sec
RG        51.9
EW       96.000 usec
DE       25.61 usec
TE       298.4 K
D1       1.5000000 sec
TD0      1

----- CHANNEL f1 -----
NUC1      1H
P1       11.36 usec
PL1      -2.00 dB
PLW      18.35886598 W
SFO1     400.1320007 MHz

F2 - Processing parameters
SI       32768
SF       400.1300064 MHz
WDW      EM
  
```