



LIFTMODE
47 W. Polk St. STE 100-241
Chicago, IL 60605

liftmode@liftmode.com
www.liftmode.com



Colmaric Analyticals, LLC

812 Meadowlark Lane, Goodlettsville, TN 37072
Telephone: 615-239-8604

CERTIFICATE OF ANALYSIS

Certificate of Analysis

Berberine HCl

(5,6-Dihydro-9,10-dimethoxy-benzo[g]-1,3-benzodioxolo[5,6-a]quinolinizinium hydrochloride)

Material Lot #: 19040901 Manufacture Date: 04/09/2019
Country of Origin: China Retesting Date: 04/08/2022
Botanical Source: *Phellodendron amurense*

Analysis	Claim	Result
Berberine Hcl	≥98.0%	99.1%

Test	Specification	Result
Appearance	Yellow-Orange Fine Powder	Complies
Loss on Drying	<12.0%	10.12%
Residue on Ignition	≤2%	≤0.08%
Heavy Metals	≤10 ppm	Complies
Solvent Residue	≤ 5000 ppm	Complies
Total Plate Count	≤1000 CFU/g	Complies
Yeast & Mold	≤100 CFU/g	Complies
E.Coli	Absent	Complies
Pseudomonas aeruginosa	Absent	Complies

Berberine HCl should be stored at or below room temperature in a tightly sealed durable container.
Berberine HCl should be protected from excess heat, direct sunlight, excess humidity and moisture.
Berberine HCl has a stable shelf life of 3 years from the date of testing when properly stored.

Product Name	Berberine HCL	Product Lot Number	19040901
Report Date	06/05/2019	Laboratory Number	12080

Description	Method	Result
Identification	H NMR	Conforms
Assay	HPLC	99.1 %
Lead	ICP-MS	0.012 ppm
Arsenic	ICP-MS	0.097 ppm
Cadmium	ICP-MS	0.211 ppm
Mercury	ICP-MS	0.033 ppm
Total Aerobic Count	Biolumix	<10 CFU/g
Yeast and Mold	Biolumix	<10 CFU/g
E. Coli	Biolumix	Absent
Coliform	Biolumix	<10 CFU/g
Salmonella	Biolumix	Absent

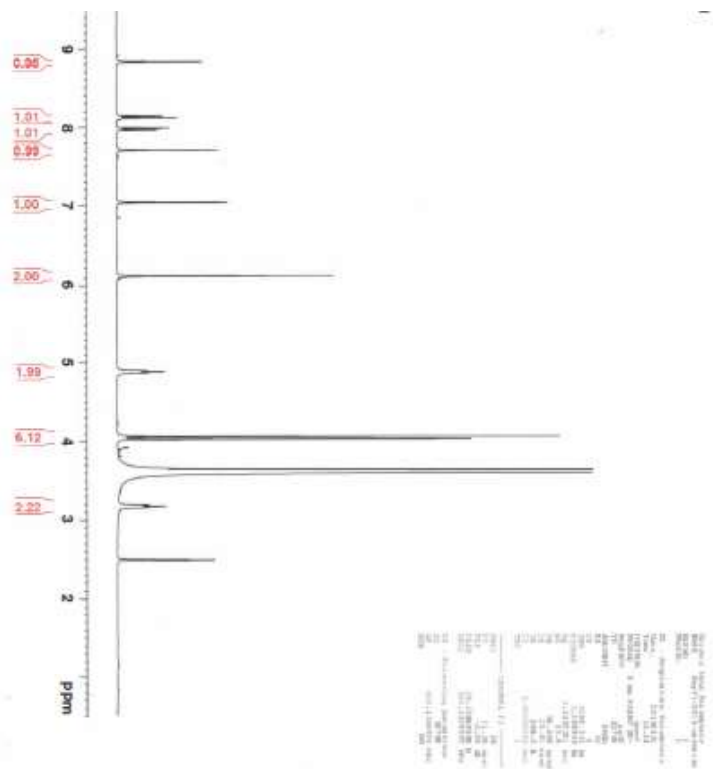
Michael Robil

Michael Robil
QA Auditor

06/05/19

06/05/2019
Date

The result(s) stated in this report is only for the sample submitted. This report may not be reproduced in whole or in part, nor may any reference be made to the work, the result, or the company in any news release, public announcements or advertising without our prior written consent.



Main Benefits

- Berberine HCL is a powerful health promoting supplement, best known for its ability to help support a healthy circulatory system.
- Research shows that Berberine HCL also helps to reduce inflammatory markers while supporting healthy blood sugar levels and a healthy metabolism.
- Berberine HCL is a compound that can be extracted from a large number of plants and herbs, giving many herbs their healthful properties.

Main Cautions

- Berberine HCL has numerous interactions with other supplements, as well as prescription and over-the-counter medications. Do not use Berberine HCL if you are taking any medication.
- Side effects of larger serving sizes may include gastrointestinal discomfort and constipation. Berberine HCL may not be suitable for people with low blood pressure.
- Berberine HCL can be transferred through breast milk and should not be used by pregnant or breastfeeding women.

Usage Tips

- A 10cc measuring scoop is included. One level scoop contains approximately one serving, or approximately **500 mg of Berberine HCL**. As a dietary supplement, take 1-2 servings 1-2 times per day. Start at the lower suggested quantity to assess response.
- It is safe to stack Berberine HCL with other supplements, so long as the amount consumed does not exceed the suggested serving size.
- The benefits of Berberine HCL are most effective when they are supported by a healthy diet and plenty of exercise.
- This supplement is not intended to treat, diagnose, prevent, or cure any diseases. Consult your healthcare provider before use if you have a medical condition or if you are taking any prescription medications.
- The negative effects of Berberine HCL are dependent on the amount taken, so use of a scale with 10mg/0.1g accuracy or better is highly recommended.
- Use of capsules, or mixing with tea, yogurt, apple sauce, or oatmeal may help make the powder more tolerable.

BERBERINE

