



# Certificate of Analysis

47 W Polk St. STE 100-241 Chicago, IL 60605  
liftmode@liftmode.com

LiftNode

## Melatonin

 N-acetyl-5-methoxy tryptamine

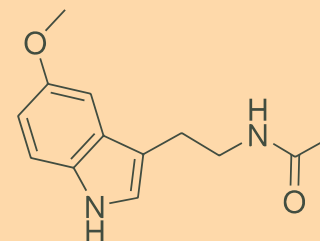
Material Lot #: 201107 Test Date: 06/02/2021  
Country of Origin: China Re-Test Date: 06/05/2024

Analysis	Claim	Result
Melatonin	≥98%	99.4%

Test/Method	Specification	Result
Lead (ICP-MS)	<1 ppm	Conforms
Arsenic (ICP-MS)	<1 ppm	Conforms
Cadmium (ICP-MS)	<1 ppm	Conforms
Mercury (ICP-MS)	<1 ppm	Conforms
Total Aerobic Plate Count (Biolumix)	<1,000 CFU/g	Conforms
Yeast & Mold (Biolumix)	<100 CFU/g	Conforms
E.Coli (Biolumix)	Absent	Conforms
Coliform (Biolumix)	<10 CFU/g	Conforms
Salmonella (Biolumix)	Absent	Conforms
Assay (HPLC)	≥98.0%	99.4%

Melatonin should be stored at or below room temperature in a tightly sealed durable container. Melatonin should be protected from excess heat, direct sunlight, excess humidity and moisture. Melatonin has a stable shelf life of 3 years from the date of manufacture when properly stored.

## MELATONIN



### Main Benefits

- Melatonin is the body's natural 'sleep-hormone' and helps to regulate the circadian rhythm. It is produced in response to changes in the dark-light cycle.
- Melatonin has the ability to help improve the quality of sleep and to reduce the time taken to fall asleep.
- Apart from being an endogenous natural sleep-aid, Melatonin supplements are also powerful antioxidants and help to promote a healthy circulatory system.

### Main Cautions

- In research studies, serving sizes of up to 500mg have not produced any reportable adverse effects.
- It is not recommended to exceed the serving size for Melatonin. Tolerance may occur after continuous use.
- Please consult your doctor before using Melatonin supplements if you have any medical conditions, are pregnant or breast-feeding, or are using any medication.

### Usage Tips

- A double sided measuring scoop is included. One level scoop from the small end contains approximately one serving, or approximately **3mg of Melatonin**. As a dietary supplement, take 1 serving 30 minutes prior to desired sleep. Start at the lower suggested quantity to assess response.
- The negative effects of Melatonin are dependent on the amount taken, so use of a scale with 10mg/0.01g accuracy or better is highly recommended.
- Use of capsules, or mixing with tea, yogurt, apple sauce, or oatmeal may help make the powder more tolerable.
- This supplement is not intended to treat, diagnose, prevent, or cure any diseases. Consult your healthcare provider before use if you have a medical condition or if you are taking any prescription medications.
- It is safe to stack Melatonin with other supplements, so long as the amount consumed does not exceed the suggested serving size.
- The benefits of Melatonin are most effective when they are supported by a healthy diet and plenty of exercise.



## S & N LABS

2021 E. Fourth Street Santa Ana, California 92705 (714) 543-2211

2 June 2021

Job Number:	25095b
PO Number:	verbal


Synaptent LLC  
47 W. Polk Street #100-241  
Chicago, Illinois 60605

### REPORT OF ANALYSIS

One jar labeled "Melatonin #201107" was received on 1 June 2021. The powder in the jar was analyzed for purity using high pressure liquid chromatography (HPLC). The detector was set to 195nm. The results are summarized in the table below.

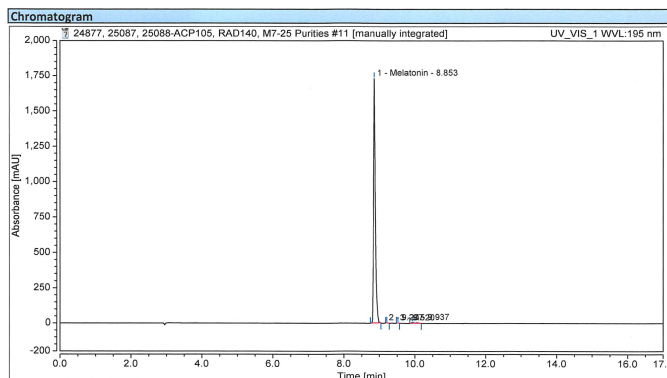
Sample	Chromatographic Purity (% area)
Melatonin #201107	99.4

The chromatogram is enclosed for your reference.

  
Neil E. Spingam, Ph.D.  
President

### Chromatogram and Results

Injection Details			
Injection Name:	Melatonin #201107	Run Time (min):	20.00
Vial Number:	B6	Injection Volume:	10.00
Injection Type:	Unknown	Channel:	UV_VIS_1
Calibration Level:	AD 250mm MaxRP 20min	Wavelength:	195
Instrument Method:	Processing Method	Bandwidth:	5
Processing Method:	01/Jun/21 17:45	Dilution Factor:	1.0000
Injection Date/Time:		Sample Weight:	1.0000



Integration Results						
No.	Peak Name	Retention Time min	Area mAU*min	Height mAU	Relative Area %	Relative Height %
1	Melatonin	8.853	104.117	1731.338	99.38	99.62
2		9.207	0.065	1.097	0.06	0.06
3		9.520	0.030	0.655	0.03	0.04
4		9.937	0.555	4.904	0.53	0.28
Total:			104.768	1737.995	100.00	100.00

Report Template/Integration

Chromeleon (c) Dionex  
Version 7.2.10.23929



### Eurofins Microbiology Laboratories (New Berlin)

Eurofins Microbiology Laboratories (New Berlin)

2345 S. 170th St. Wisconsin  
New Berlin, Wisconsin 53151  
+1 262 754 5300  
Micro-MKE@EurofinsUS.com

Synaptent

Joseph Watkins  
1442 W. Fulton Street  
Chicago, IL 60607

Client Code: QH0000902  
PO#: 201107

### ANALYTICAL REPORT

AR-21-QH-030281-01

Received On: 01Jun2021  
Reported On: 07Jun2021

Synaptent

Joseph Watkins  
1442 W. Fulton Street  
Chicago, IL 60607

### ANALYTICAL REPORT

AR-21-QH-030281-01

Client Code: QH0000902  
PO#: 201107

Received On: 01Jun2021  
Reported On: 07Jun2021

Eurofins Sample Code:	477-2021-06010095	Sample Registration Date:	01Jun2021
Client Sample Code:	201107	Condition Upon Receipt:	acceptable, 22.3°C
Sample Description:	Melatonin	Sample Reference:	201107

FS001 - Heavy Metals (As, Cd, Hg, and Pb)	Reference	Accreditation	Completed	Sub
	AOAC 2011.19 and 993.14 (modified)	ISO/IEC 17025:2017	06Jun2021	1
		AZLA 2918.01		

Parameter	Result
Arsenic	<10.0 ppb
Cadmium	<5.00 ppb
Lead	<5.00 ppb
Mercury	<5.00 ppb

UM8VD - Total Coliforms - CMMEF Chapter 9.933	Reference	Accreditation	Completed
	CMMEF Chapter 9.933	ISO/IEC 17025:2017	02Jun2021
		AZLA 3329.07	

Parameter	Result
Coliforms	< 10 cfu/g
Parameter	Result
Escherichia coli	< 10 cfu/g

UMDTC - Salmonella species - AOAC-RI 121501	Reference	Accreditation	Completed
	AOAC-RI 121501	ISO/IEC 17025:2017	02Jun2021
		AZLA 3329.07	

Parameter	Result
Salmonella	Not Detected per 25 g

UMHBM - Staphylococcus aureus - BAM Chapter 12	Reference	Accreditation	Completed
	BAM Chapter 12	ISO/IEC 17025:2017	03Jun2021
		AZLA 3329.07	


Parameter	Result
Staphylococcus aureus	< 10 cfu/g

UMIB1 - Yeast - FDA BAM Chapter 18 mod.	Reference	Completed
	FDA BAM Chapter 18 mod.	06Jun2021

Subcontracting partners:

1 - Eurofins Food Chemistry Testing US Madison, WI

Respectfully Submitted,

  
Michael Kaiser  
Associate Technical Leader

Results shown in this report relate solely to the item submitted for analysis. | Any opinions/interpretations expressed on this report are given independent of the laboratory's scope of accreditation. | All results are reported on an "As Received" basis unless otherwise stated. | Reports shall not be reproduced except in full without written permission of Eurofins Scientific, Inc. | All work done in accordance with Eurofins General Terms and Conditions of Sale: [www.eurofins.com/terms\\_and\\_conditions.pdf](http://www.eurofins.com/terms_and_conditions.pdf) | v Indicates a subcontract test to a different lab. Lab(s) are listed at end of the report. For further details about the performing labs please contact your customer service contact at Eurofins. Measurement of uncertainty can be obtained upon request.

