

LIFTMODE

LIFTMODE
47 W. Polk St. STE 100-241
Chicago, IL 60605

liftmode@liftmode.com
www.liftmode.com

CERTIFICATE OF ANALYSIS

Potassium Sorbate

Potassium (2E,4E)-hexa-2,4-dienoate

Material Lot #: 1611231 Re-Test Date: 07/30/2019
Country of Origin: China Re-Test Date: 08/02/2022

Analysis	Claim	Result
Potassium Sorbate	≥99.00%	99.98%

Test	Specification	Result
Assay	≥99.00%	99.98%
Loss on Drying	≤1.0%	0.34%
Alkalinity	≤1.0%	0.47%
Aldehydes	≤0.1%	Complies
Arsenic	≤3 ppm	Complies
Lead	≤2 ppm	Complies
Mercury	≤1 ppm	Complies
Heavy Metal	≤10 ppm	Complies
Cadmium	≤0.02 ppm	Complies
Chloride	≤0.1%	<0.018%
Sulfate	≤0.1%	<0.038%

Potassium Sorbate should be stored at or below room temperature in a tightly sealed durable container. Potassium Sorbate should be protected from excess heat, direct sunlight, excess humidity and moisture. Potassium Sorbate has a stable shelf life of 3 years from the date of manufacture when properly stored.

LIFTMODE

LIFTMODE
47 W. Polk St. STE 100-241
Chicago, IL 60605

liftmode@liftmode.com
www.liftmode.com

Potassium Sorbate



Main Benefits

- Potassium Sorbate is a water soluble food preservative that effectively increases the shelf life of culinary ingredients.
- Potassium Sorbate has no effect on taste, smell, or appearance of the food.
- Potassium Sorbate is so reliable because of its effective antimicrobial properties.

Main Cautions

- In rare cases, some people may have an allergic reaction to Potassium Sorbate resulting in skin or scalp irritation.
- Potassium Sorbate is an eye irritant, so particular caution is advised when using this supplement.
- Do not use this supplement without first consulting with your doctor if you are taking any medication or have any medical condition.

Usage Tips

- A blue micro-measuring scoop is included. Two rounded scoops contains approximately one serving, or approximately **4mg of Potassium Sorbate**. As a food preservative, use at 0.05% (50mg per 100g of any given nutritional solution).
- The negative effects of Potassium Sorbate are dependent on the amount taken. Use of a scale with 10mg/0.01g accuracy or better is highly recommended.
- Use of capsules, or mixing with tea, yogurt, apple sauce, or oatmeal may help make the powder easier to tolerate.
- This supplement is not intended to treat, diagnose, prevent, or cure any diseases. Consult your healthcare provider before use if you have a medical condition or if you are taking any prescription medications.
- It is safe to stack Potassium Sorbate with other supplements, so long as the amount consumed does not exceed the suggested serving size.
- The benefits of Potassium Sorbate are most effective when they are supported by a healthy diet and plenty of exercise.



812 Meadow Lark Lane, Goodlettsville, TN 37072
Telephone: 615-239-8604

Certificate of Analysis

Synaptent LLC
47 W Polk Street, 100-241
Chicago, IL 60654

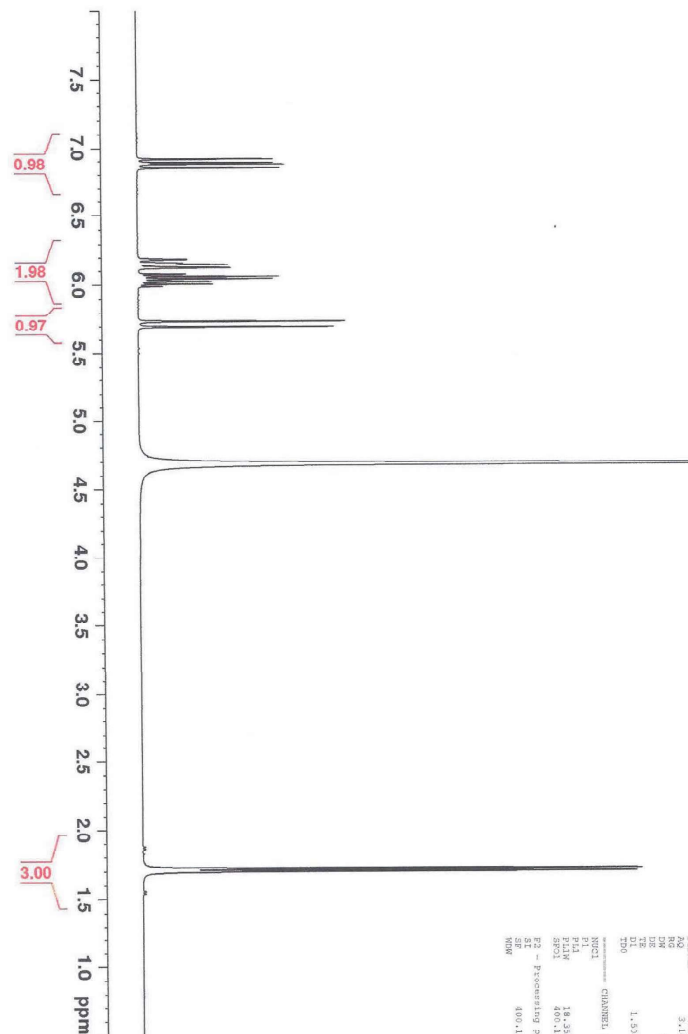
Product Name	Potassium Sorbate	Product Lot Number	1611231
Report Date	07/30/2019	Laboratory Number	12351

Description	Method	Result
Identification	Proton NMR	Conforms to structure
Assay	USP Titration	99.9%
Lead	ICP-MS USP <730>	0.013 ppm
Arsenic	ICP-MS USP <730>	<0.0001 ppm
Cadmium	ICP-MS USP <730>	0.010 ppm
Mercury	ICP-MS USP <730>	0.002 ppm
Total Aerobic Count	Biolumix	<100 cfu/g
Yeast and Mold	Biolumix	<100 cfu/g
E. Coli	Biolumix	<10 cfu/g
Coliform	Biolumix	<10 cfu/g
Salmonella	Biolumix	Negative

Collin Thomas *Coll 2*
Laboratory Manager

07/30/2019 7/30/19
Date

The result(s) stated in this report is only for the sample submitted. This report may not be reproduced in whole or in part, nor may any reference be made to the work, the result, or the company in any news release, public announcements or advertising without our prior written consent.



1H NMR of Potassium Sorbate
in D2O
Lot # 12351
Colmaric Analytical
400 MHz
07-26-19

[illegible]