



LIFTMODE  
47 W. Polk St. STE 100-241  
Chicago, IL 60605

liftmode@liftmode.com  
www.liftmode.com

## CERTIFICATE OF ANALYSIS

### Taurine

(2-Aminoethane-1-sulfonic acid)

Material Lot #: 1806522      Manufacture Date: 06/14/2018  
Country of Origin: China      Retesting Date: 09/13/2021

Analysis	Claim	Result
Taurine	≥99.0%	99.7%

Test	Specification	Result
Appearance	Colorless or white crystalline powder	Complies
Clarity of Solution	Clear and colorless	Complies
PH	4.1-5.6	5.0
Heavy Metals	≤10 ppm	Complies
Mercury	≤0.5 ppm	Complies
Lead	≤1 ppm	Complies
Arsenic	≤0.5 ppm	Complies
Cadmium	≤0.5 ppm	Complies
Sulfate	≤0.01 ppm	Complies
Iron	≤10 ppm	Complies
Ammonium	≤0.02%	Complies
Related Substances	≤0.2%	Complies
Loss on Drying	≤0.2%	0.1%
Residue on Ignition	≤0.1%	0.07%
Total Plate Count	≤1,000 cfu/g	Negative
Yeast & Mold	≤100 cfu/g	Negative
E.coli	Negative	Negative
Salmonella	Negative	Negative
Assay	≥99.0%	99.7

Taurine should be stored at or below room temperature in a tightly sealed durable container. Taurine should be protected from excess heat, direct sunlight, excess humidity and moisture. Taurine has a stable shelf life of 3 years from the date of manufacture when properly stored.



LIFTMODE  
47 W. Polk St. STE 100-241  
Chicago, IL 60605

liftmode@liftmode.com  
www.liftmode.com

## CERTIFICATE OF ANALYSIS

Product Name	Taurine	Product Lot Number	C002-YB1806522
Report Date	09/14/2018	Laboratory Number	10796

Description	Method	Results
Identification	TLC	Positive
Assay	Titration	99.6 %
Lead	ICP-MS	0.020 ppm
Arsenic	ICP-MS	<0.001 ppm
Cadmium	ICP-MS	<0.001 ppm
Mercury	ICP-MS	0.023 ppm

#### Main Benefits

- Taurine is an "semi-essential" amino acid used in a wide variety of biochemical pathways in the body, including protein synthesis.
- Its wide variety of benefits range include reduced stress levels, increased energy, support of a healthy metabolism, and improved libido.
- Taurine acts as a powerful antioxidant, removing "free-radicals" and LDL cholesterol from the blood, supporting a healthy circulatory system.

#### Main Cautions

- Taurine supplements are considered highly safe and effective and generally without noticeable adverse effects at the recommended serving size.
- Please consult your doctor before using Taurine if you have any underlying medical conditions or are using any medication.
- There is insufficient information regarding safety of Taurine supplements for pregnant and breast-feeding women.

## TAURINE

NC(CS(=O)(=O)O)C

#### Usage Tips

- A 1.7cc measuring scoop is included. One level scoop contains approximately one serving, or approximately **1500mg of Taurine**. As a dietary supplement, take 1-2 servings 1-2 times per day. Start at the lower suggested quantity to assess response.
- The negative effects of Taurine are dependent on the amount taken, so use of a scale with 10mg/0.01g accuracy or better is highly recommended.
- Use of capsules, or mixing with tea, yogurt, apple sauce, or oatmeal may help make the powder more tolerable.

- This supplement is not intended to treat, diagnose, prevent, or cure any diseases. Consult your healthcare provider before use if you have a medical condition or if you are taking any prescription medications.
- It is safe to stack Taurine with other supplements, so long as the amount consumed does not exceed the suggested serving size.
- The benefits of Taurine are most effective when they are supported by a healthy diet and plenty of exercise.



812 Meadowlark Lane, Goodlettsville, TN 37072  
Telephone: 615-239-8604

Certificate of Analysis

Synaptent LLC  
47 W Polk Street, 100-241  
Chicago, IL 60654

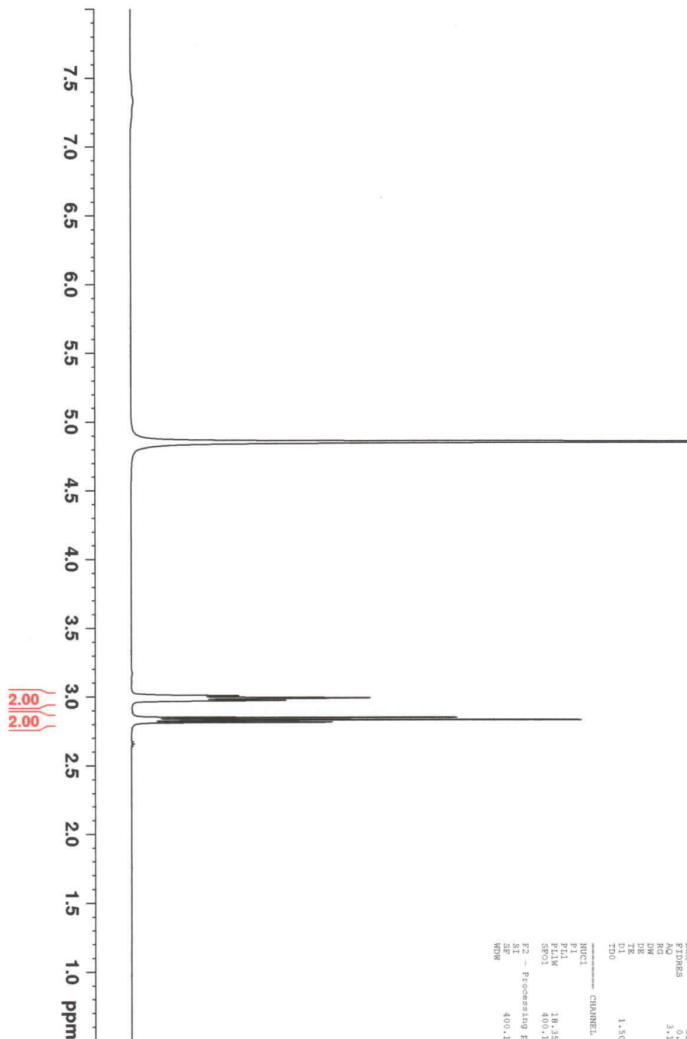
Product Name	Taurine	Product Lot Number	1806522
Report Date	10/10/2018	Laboratory Number	10954

Description	Method	Result
Identification	1H NMR	Conforms
Assay	Titration	100.4 %
Lead	ICP-MS	0.006 ppm
Arsenic	ICP-MS	<0.001 ppm
Cadmium	ICP-MS	<0.001 ppm
Mercury	ICP-MS	0.045 ppm
Total Aerobic Count	Biolumix	<100 CFU/g
Yeast and Mold	Biolumix	<100 CFU/g
E. Coli	Biolumix	Absent
Coliform	Biolumix	<10 CFU/g
Salmonella	Biolumix	Absent

*Michael Robil*  
**Michael Robil**  
QA Auditor

*10/10/18*  
**10/10/2018**  
Date

The result(s) stated in this report is only for the sample submitted. This report may not be reproduced in whole or in part, nor may any reference be made to the work, the result, or the company in any news release, public announcements or advertising without our prior written consent.



1H NMR of Taurine  
in D2O/DCI  
Lot #10954  
Colmaric Analytical  
400 MHz  
10-08-18

Current Data Parameters  
Date\_ 20181010  
Time\_ 10:52:05  
INSTRUM 5 mm BBO-SPX  
PULPROG zgpg30  
AQ 2.00  
RG 2000  
NUC1 13C  
NUC2 13C  
SFO1 400.1320007 MHz  
F2 - Processing parameters  
SI 32768  
SF 400.1320007 MHz  
WDW EM  
SSB 0  
GB 0  
PC 0  
MC 0  
DI 0  
T0 0  
----- CHANNEL F1 -----  
NUC1 13C  
P1 11.18 usec  
PL1 18.15dB  
SFO1 400.1320007 MHz  
F2 - Processing parameters  
SI 32768  
SF 400.1320007 MHz  
WDW EM  
SSB 0  
GB 0  
PC 0  
MC 0  
DI 0  
T0 0