

LIFTMODE

LIFTMODE
47 W. Polk St. STE 100-241
Chicago, IL 60605

liftmode@liftmode.com
www.liftmode.com

CERTIFICATE OF ANALYSIS

Tribulus Terrestris Extract

Material Lot #: 18060860 Test Date: 08/27/2019
Country of Origin: China Re-Test Date: 08/24/2022

Analysis	Claim	Result
Saponins	≥60.0%	69.8%

Description	Method	Result
Saponins	UV-vis	69.8%
Lead	ICP-MS USP <730>	0.055 ppm
Arsenic	ICP-MS USP <730>	<0.0001 ppm
Cadmium	ICP-MS USP <730>	0.046 ppm
Mercury	ICP-MS USP <730>	0.002 ppm
Total Aerobic Count	Biolumix	<1,000 cfu/g
Yeast & Mold	Biolumix	<100 cfu/g
E. Coli	Biolumix	Negative
Coliform	Biolumix	<10 cfu/g
Salmonella	AOAC 967.26	Negative

Tribulus Terrestris Extract should be stored at or below room temperature in a tightly sealed durable container.
Tribulus Terrestris should be protected from excess heat, direct sunlight, excess humidity and moisture.
When stored properly; Tribulus Terrestris should be retested 3 years from the date of manufacture (or last testing).

LIFTMODE

LIFTMODE
47 W. Polk St. STE 100-241
Chicago, IL 60605

liftmode@liftmode.com
www.liftmode.com

Tribulus Terrestris Extract



Main Benefits

- Tribulus Terrestris (AKA Bai Ji Li) has been used in Ayurvedic medicine and is known to help maintain healthy sexual function.
- Tribulus Terrestris Extract can also be used to promote a healthy circulatory system.
- Furthermore, studies indicate that Tribulus Terrestris Extract can also be effective in improving overall cognitive and immune system performance.

Main Cautions

- Several studies indicate that Tribulus Terrestris Extract has minimal adverse side effects and is generally safe for consumption.
- We still strongly advise that you do not exceed the recommended serving size.
- Do not use this supplement without first consulting with your doctor if you are taking any medication or have any medical condition.

Usage Tips

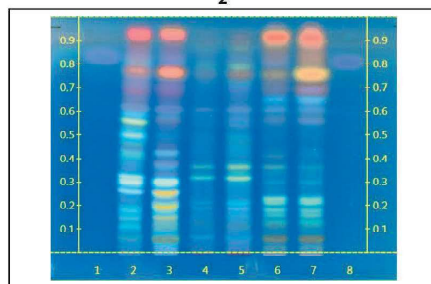
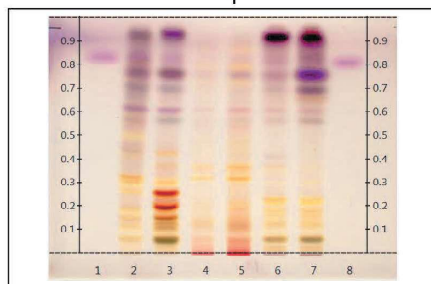
- A 0.625 cc measuring scoop is included. Two rounded scoops contains approximately one serving, or approximately **600mg of Tribulus Terrestris Extract**. As a dietary supplement, take 1 serving 1-2 times per day. Start at the lower suggested quantity to assess response.
- The negative effects of Tribulus Terrestris Extract are dependent on the amount taken. Use of a scale with 10mg/0.01g accuracy or better is highly recommended.
- Use of capsules, or mixing with tea, yogurt, apple sauce, or oatmeal may help make the powder easier to tolerate.
- This supplement is not intended to treat, diagnose, prevent, or cure any diseases. Consult your healthcare provider before use if you have a medical condition or if you are taking any prescription medications.
- It is safe to stack Tribulus Terrestris Extract with other supplements, so long as the amount consumed does not exceed the suggested serving size.
- The benefits of Tribulus Terrestris Extract are most effective when they are supported by a healthy diet and plenty of exercise.

Certificate Issued To:
Synaptent
47 W. Polk St.
Chicago, Illinois 60605



Work performed at:
Alkemist Labs
12661 Hoover Street
Garden Grove, CA 92841
714-754-HERB (4372)
714-668-9972 (FAX)
Sales@Alkemist.com
www.Alkemist.com

Certificate of Analysis: Tribulus terrestris (18060860)
High Performance Thin-Layer Chromatography with Photo-Documentation



Company Name: Synaptent
Title: Tribulus terrestris
Plant Part: Whole herb with fruit
Sample Received: 07/29/19
Sample Packaging: Light Sensitive Plastic Bottle or Jar
Form of Botanical: powdered extract
Appearance: Blue plastic bottle with silver lid
Lot Number: (18060860) → Lanes 4(1µl), 5(3µl)
Sample: 19210FKY_1
Latin Name: Tribulus terrestris L. [Zygophyllaceae]
Reference Sample: Lane 2(6µl) [UA22813NRPL1] Tribulus terrestris (entire); Lane 3(6µl) [UA34314HBR2] Tribulus terrestris (aerial part); Lane 6(6µl) [UA11517AHP1], Lane 7(6µl) [UA14902SWH] Tribulus terrestris (fruit); held at Alkemist Labs, Garden Grove, CA.
Analyst: A. Davis, J. Kim, N. Afendikova, M. Edwards, S. Rodriguez, S. Kabbaj, M. Lababidi, N. Hoang, K. Tran 122800
Sample Preparation: 0.3g+3mL Methanol, sonicate/heat at 50°C for 30 min.
Stationary Phase: Silica gel 60, HPTLC plates
Mobile Phase: chloroform: methanol: Water [6.1/3.2/0.7]
Detection: (1) Vanillin/Sulfuric, 110°C, 2min, vis (Reich, E., 2007)
(2) Vanillin/Sulfuric, 110°C, 2min, 366nm (Reich, E., 2007)
Reference Standard: Lanes 1(3µl) and 8(3µl) β-Sitosterol (R026A0, USP), Methanol (0000206696, VWR)
Reference Source: Method Developed by Alkemist Labs
IDI-SOP-72-01

Comments & Conclusions: Lanes 4, 5 are the test sample Tribulus terrestris (18060860) Lanes 2, 3, 6, 7 are the reference samples used for comparison. This test sample, Tribulus terrestris (18060860) is consistent with the chromatographic profile of the reference samples of Tribulus sp., used above. **This test sample Tribulus terrestris (18060860) has characteristics of Tribulus sp.**

NOTE: The above conclusion may be a function of the natural variance found in botanicals &/or the extraction process used to create specific extracts. The growing and drying conditions, age, seasonal variations, geographic location, extraction solvents, etc. all play a role in the phytochemical fingerprint of botanicals as well as their extracts; hence, chromatographic variations are expected.

Examined, Reviewed & Authorized by: Khanh N Tran, HPTLC, R&D Supervisor, Alkemist Labs



Digitally signed by
Khanh Tran
DN: cn=Khanh Tran,
email=khanh@alkemist.com,
c=US
Date: 2019.08.02
16:19:25 -0700

Report Date: 08/01/19



Note: Any unidentified lanes in the above chromatograms are confidential and may represent internal studies or other test samples not related to 18060860. This report applies to the sample investigated and is not necessarily indicative of the quality or consistency of apparently identical or similar products. This report is for the exclusive use of the party who requested the report and not for public dissemination or use by third parties, including for promotional purposes, without the prior written permission of Alkemist Labs, Inc. This report provides technical results for a specific sample and the report shall not be altered, modified, supplemented or abstracted in any manner. Any violation of these conditions renders the report and its results void. © 2019 Alkemist Labs, Inc. All Rights Reserved